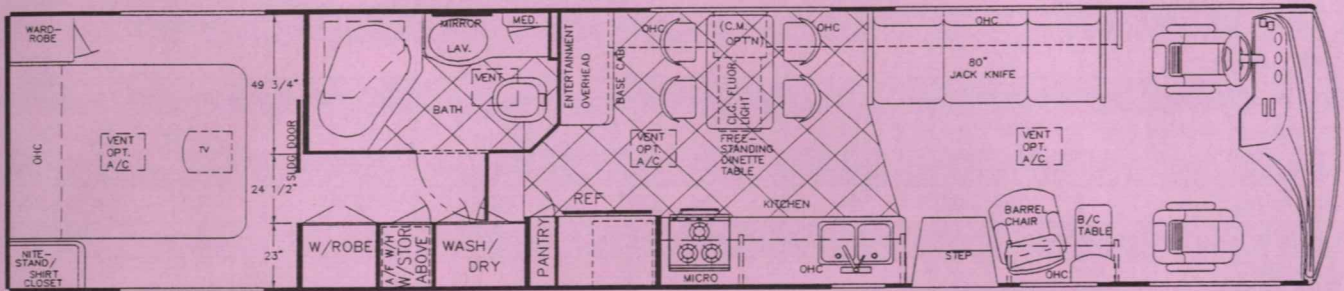


Sun Voyager

BY GULF STREAM®

Your Best Choice for Luxury and Value!

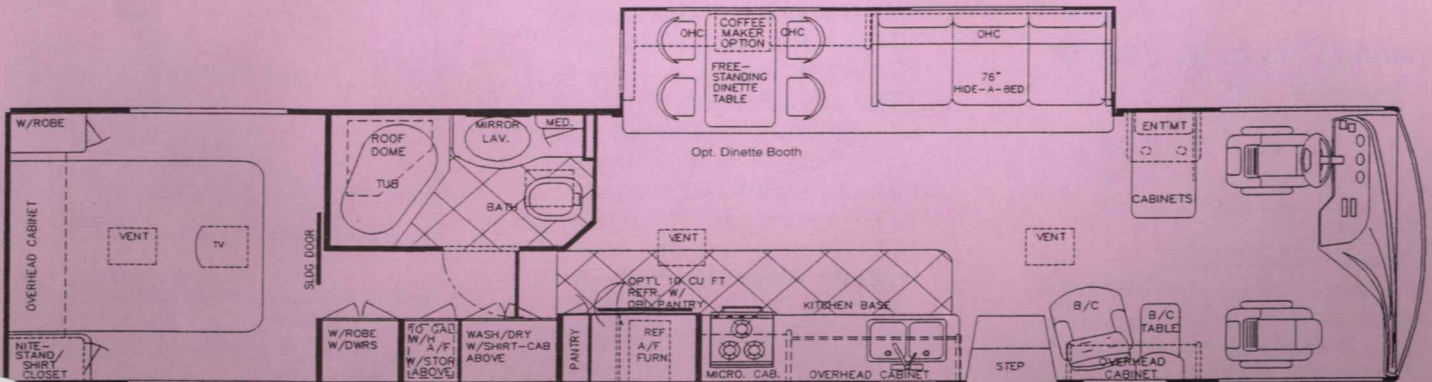
All Slide-Outs Now Have Overhead Cabinets!!



Model 8380 SVB (101" Wide, Freightliner Chassis, 275 HP Caterpillar Engine)

SUN VOYAGER BUS

34' & 38' MODELS ONLY: Freightliner X-Line 25,000 GVWR Chassis w/CATERpillar CFE 3126, 7.2 Liter, 275 HP @ 2200 RPM, 800 ft./lb. Torque @ 1440 RPM, Electronic Diesel w/Allison 6-Speed World Transmission, Full Air Drum Brakes, Full Air-Ride Suspension, Exhaust Brake, 50 Degree Turning Radius.



Model 8381 SVB (101" Wide, Freightliner Chassis, 275 HP Caterpillar Engine)

IF YOU WANT A COACH THAT'S BUILT AS WELL AS A GULF STREAM...

1. Seamless Rubber Roof For Greater Energy Efficiency and Dependability.

2. Luan Decking for Additional Strength.

3. Molded E.P.S. Brick Insulation Provides Consistent Insulative Value As Well As Superior Dimensional Rigidity.

4. One-Piece Formed Aluminum Air Conditioning Duct, Completely Surrounded By Polystyrene Insulation.

5. Bubble-Wrapped Foil Insulation Provides Superior Insulation.

6. Rugged Welded Tube Roof Framing.

7. Soft Touch Ceiling Fabric for Added Sound Insulation.

8. Aluminum Cove Molding.

9. Bubble-Wrapped Foil Insulation Minimizes Thermal Transfer.

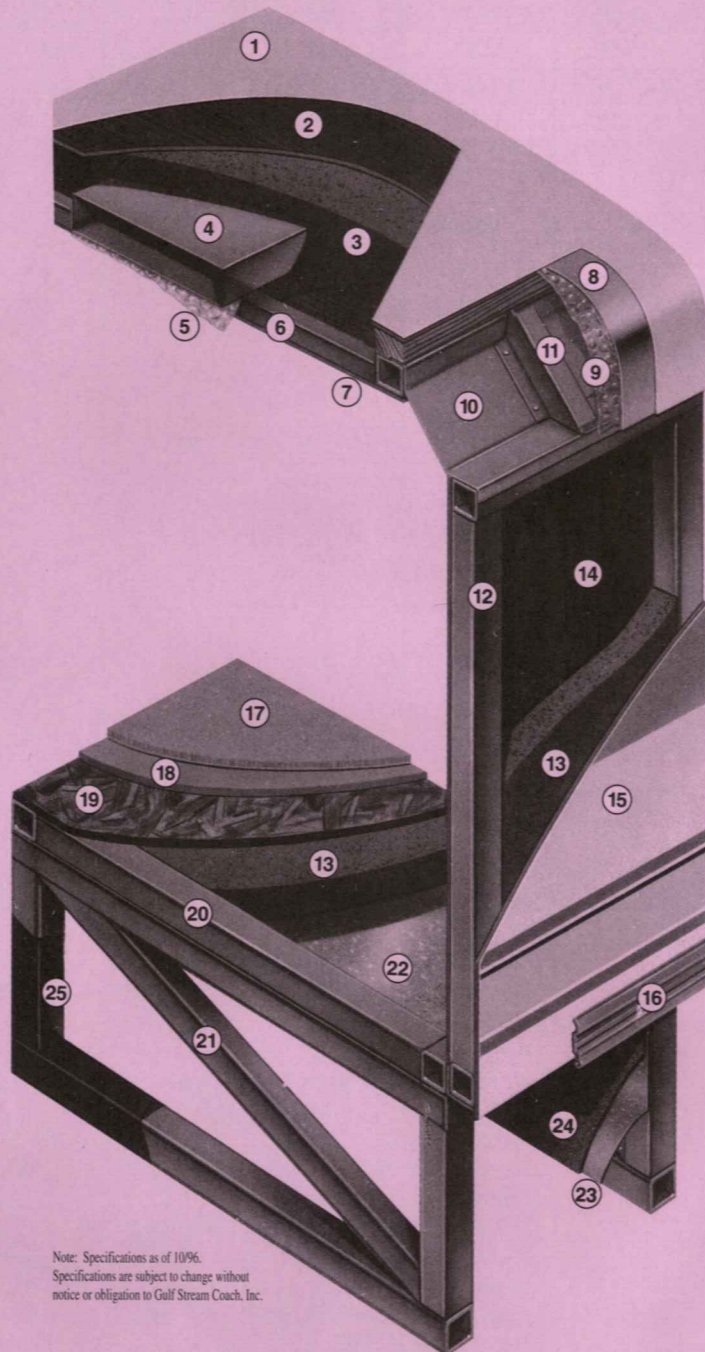
10. Rugged Roll-Formed Steel Roof-to-Sidewall Transition Member Insures Structural Integrity and Stability.

11. Die-Stamped Steel Transition Member Gusseting Provides Greater Strength and Structural Integrity.

12. Rugged Heavy-Gauge Tubing, Fixture Welded to Form the Sidewall Framing.

13. High-Density E.P.S. Insulation Provides Superior Laminating and Bonding Characteristics and Insures Greater Energy Efficiency.

14. Interior Wall Panels Securely Laminated to Sidewall Framing.



Note: Specifications as of 10/96. Specifications are subject to change without notice or obligation to Gulf Stream Coach, Inc.

15. "Mende" Fiberglass Exterior - Vacuum Bond Laminated to Sidewall Framing for Lasting Beauty and Durability.

16. Aluminum Trunk Door Hinge Extrusion Provides A Tight Seal Discouraging Air or Water Infiltration.

17. High-Quality Stain-Resistant Carpeting Available in Designer-Coordinated Colors.

18. Extra-Thick Padding Under Carpet Provides Extra Comfort and Increases Carpet Durability.

19. Continuous Structurewood Floor Decking Laminated to Steel Floor Structure Assures a Quiet, Long-Lasting, Rigid Floor

20. Heavy-Gauge Steel Tube Fixture Welded for Extra Structural Stability.

21. Heavy-Gauge Steel Tube Framing, Fixture Welded Floor Truss System Provides the Strongest Motorhome Foundation in the Industry.

22. Seamless Layer of Galvanized Steel Securely Laminated to the Steel Floor Framing.

23. Galvanized Steel Used to Form Each Storage & Holding Compartment.

24. Durable All-Weather Carpeting Completes Each Accessible Storage Compartment, Providing Extra Protection for Luggage and Valuables.

25. Rust-Prohibitive Paint Coating Applied to All Steel Framing Assures Corrosion and Rust Protection.

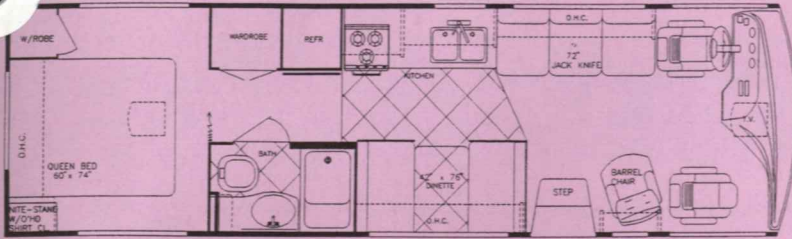


IT'S GOING TO HAVE TO BE A GULF STREAM!

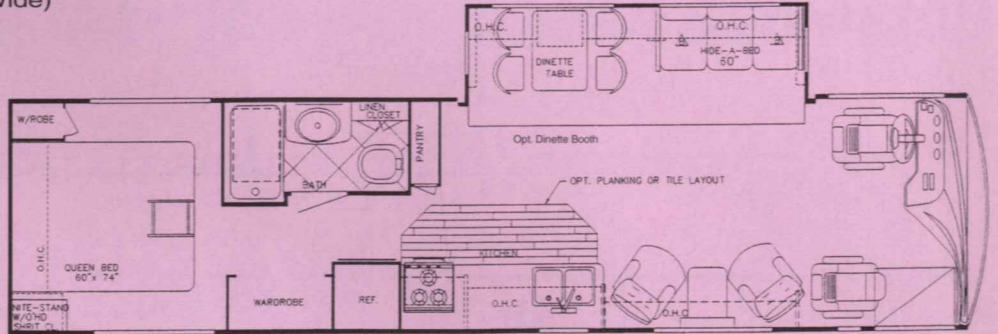
10/96

Sun Voyager

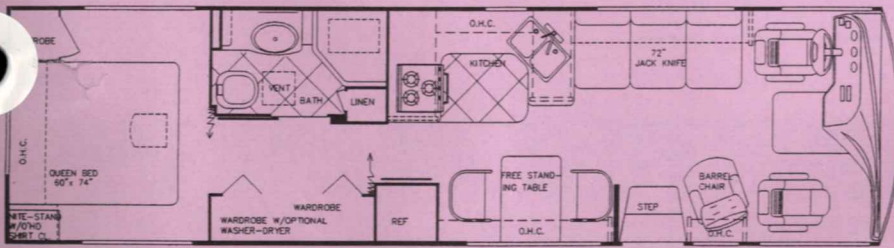
BY GULF STREAM®



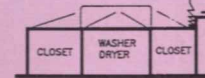
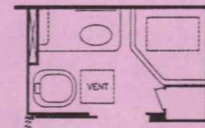
Model 8314 SYG (95" or 101" Wide)



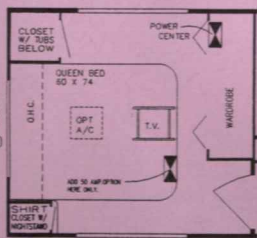
Model 8342 SYG (95" Wide)



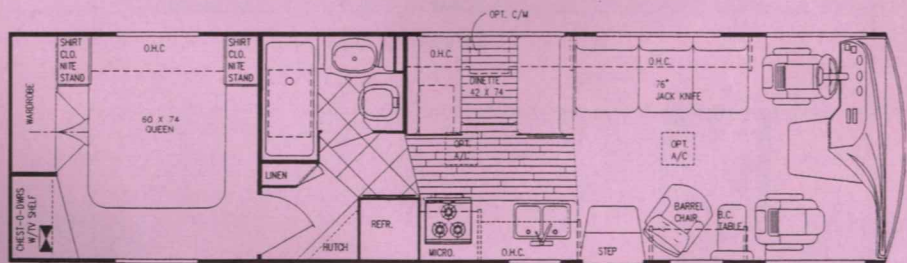
Model 8349 MXG (101" Wide)



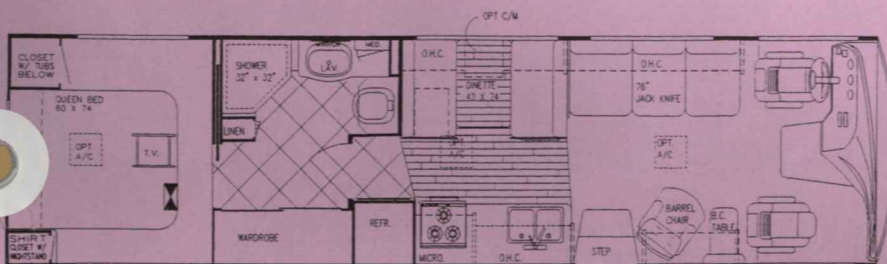
Optional Washer/Dryer



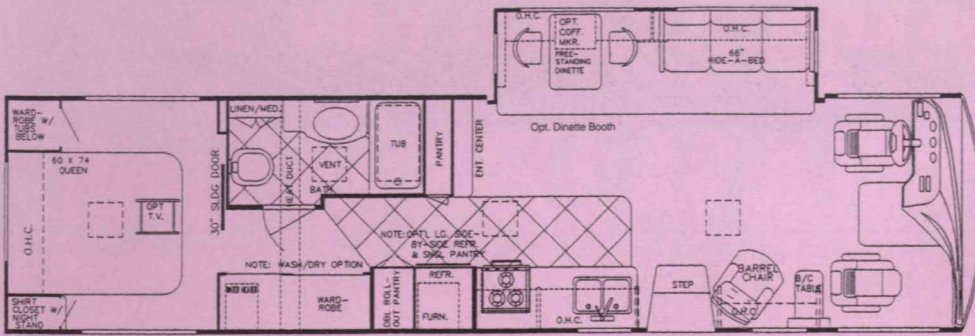
Opt. MGA



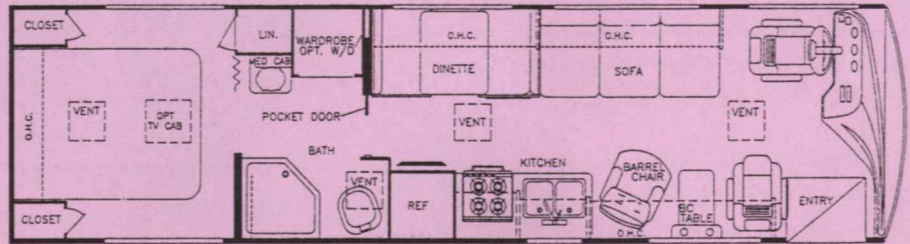
Model 8352 MGC (101" Wide)



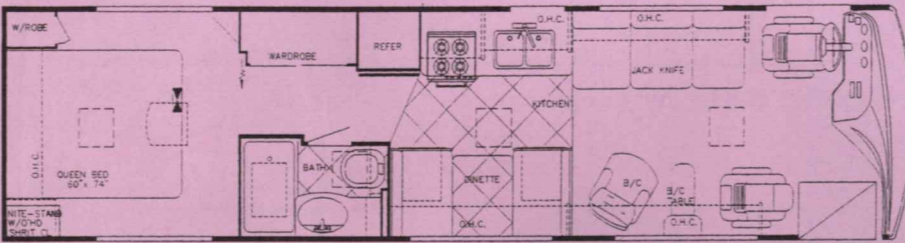
Model 8352 MGB (101" Wide)



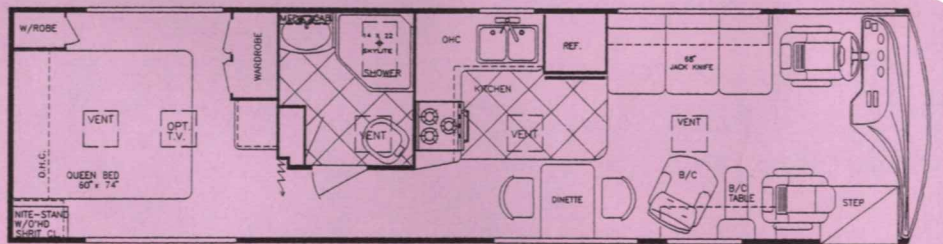
Model 8362 MXG (101" Wide)



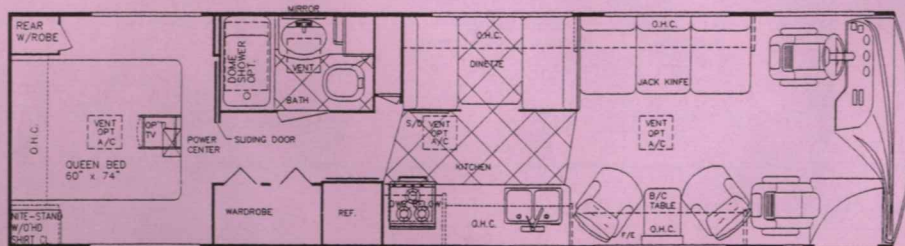
Model 8293 SYD (95" Wide)



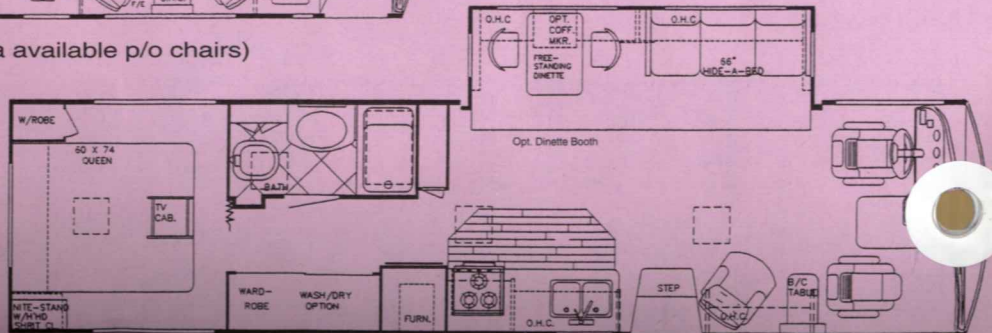
Model 8313 SYD (95" Wide)



Model 8324 SYD (95" Wide)



Model 8344 SVB (101" Wide, Sofa available p/o chairs)



Model 8342 SYD (95" or 101" SVB)

Sun Voyager

AS MODELS	8314	8342	8349	8352	8362		
FORD Chassis:							
Engine CID V8 (HP)	460	460	460	460	460		
Wheelbase	190"	216"	208"	208"	208"+43"		
GVWR (lbs.)	17,000	17,000	17,000	17,000	19,500		
Front Gross Axle Wt. Rating	6,000	6,000	6,000	6,000	6,000		
Rear Gross Axle Wt. Rating	11,000	11,000	11,000	11,000	13,500 (tag)		
CHEVROLET Chassis:							
Engine (HP)	454	454	454	N/A	N/A		
Wheelbase	190"	178"+43"	208"	N/A	N/A		
GVWR (lbs.)	16,500	18,500	16,500	N/A	N/A		
Front Gross Axle Wt. Rating	5,500	5,500	5,500	N/A	N/A		
Rear Gross Axle Wt. Rating	11,000	13,500 (tag)	11,000	N/A	N/A		
DIMENSIONS:							
Overall Length (Approx.)	31' 0"	34' 3"	33' 8"	34' 6"	36' 6"		
Overall Height w/Roof A/C	11' 11"	11' 7"	11' 7"	11' 7"	11' 7"		
Overall Width	95"/101"	95"	101"	101"	101"		
Interior Height	80"	80"	80"	80"	80"		
Interior Width	91"/97"	91"	97"	97"	97"		
CAPACITIES:							
Fresh Water Tank (Gal.)	48	52	48	50	48		
Grey Holding Tank (Gal.)	40	45	45	45	45		
Black Holding Tank (Gal.)	40	45	45	45	45		
Water Heater w/DSI (Gal.)	6	6	6	10	6		
LP Gas Tank (lbs.)	85	85	85	85	85		
Fuel Tank (Gal.) Ford/Chevy	75/60	75/60	75/60	75	75		
Furnace (BTU's)	35K	40K	40K	40K	40K		

Interior and Decor

- Beautiful Oak Cabinet Doors & Paneling
- Metal Drawer Guides w/Nylon Rollers
- Radius Cabinet & Wall Corners
- Windshield Privacy Drape
- Deluxe Furniture
- 3-Way Driver & Passenger Seats
- Deluxe Carpet W/Pad
- Coordinated Bedspread & Shams
- Lighted Closets
- Decorator Mirror
- Generous Overhead Storage
- Extra-Large Under-Bed Storage (most models)
- Pleated Shades

Electrical Systems

- Easy-Access Dual Battery System
- 12-volt, 45-Amp Converter
- Electric Supply Cord
- Electric Overload Protection
- Automotive-Type, Color-Coded Wiring
- Lighted Entry & Aisle Lights
- Directional Reading/Map Lights
- Battery Disconnect

Exterior and Construction

- Unified "New Generation" Body Structure
- Radiused Laminated Rubber Roof w/Steel Rafters
- Low Profile Transition Radius Roof, Reinforced w/12-Gauge Truss-Styled Structure
- Automotive-Style Bumpers
- Hinged Exterior Storage Doors
- Heated & Fully Enclosed Holding Tanks
- Super-Structure, Steel Truss-Type Floor System
- Laminated Floors w/Metal UnderBelly
- Laminated 2" Thick Floor & Wall Construction
- High-Density Block Foam Insulation Throughout
- Molded Roof Brick Insulation, Surrounds Ducted Roof A/C
- Sidewalls Lag-bolted Every 8" to Floor
- Fully Welded Steel Firewall
- Laminated Fiberglass Sidewalls
- Automotive-Styled New Exterior

Bath and Water

- Demand Water System
- City Water Hook-Up
- Dbl. Stainless Steel Sink (Kitchen)
- Sink Covers
- Tub/Shower Combination - Most Models
- Mirrored Medicine Cabinet
- Super-Flow Manifold Water Distribution System
- Deluxe Pedal Stool w/Sprayer
- Sky Dome
- Glass Shower Enclosure (8293, 8324, 8352B)

Appliances

- 3-Burner High-Performance Range
- Lighted Power Range Hood
- Dbl. Door, 2-Way Refrigerator
- Large Microwave Oven (Opt.)

Heating & A/C

- Ducted Furnace w/Elect. Ignition
See Chart for BTU's
- Pre-Wired for Ducted Roof A/C

SPECIFICATIONS

DIESEL MODELS	8293	8313	8324	8344	8342	8380	8381
SPARTAN Chassis:							
Engine (HP)	210/230	210/230	210/230	230	230	N/A	N/A
Wheelbase	172"	190"	190"	208"	208"	N/A	N/A
GVWR (lbs.)	19,000/20,500	19,000/20,500	19,000/20,500	20,500	23,000	N/A	N/A
Front Gross Axle Wt. Rating	7,000/8,000	7,000/8,000	7,000/8,000	8,000	8,000	N/A	N/A
Rear Gross Axle Wt. Rating	12,000/12,500	12,000/12,500	12,000/12,500	12,500	15,000	N/A	N/A
FREIGHTLINER Chassis:							
Caterpillar Engine (HP)	N/A	N/A	N/A	275	275	275	275
Wheelbase	N/A	N/A	N/A	208"	208"	252"	252"
GVWR (lbs.)	N/A	N/A	N/A	25,000	25,000	25,000	25,000
Front Gross Axle Wt. Rating	N/A	N/A	N/A	10,000	10,000	10,000	10,000
Rear Gross Axle Wt. Rating	N/A	N/A	N/A	15,000	15,000	15,000	15,000
DIMENSIONS:							
Overall Length (Spartan/Freightliner)	31' 4"	33' 8"	33' 8"	34' 3"/34' 9"	34' 3"/34' 9"	38' 7"	38' 7"
Overall Height w/Roof A/C	11' 11"	11' 11"	11' 11"	11' 11"	11' 11"	12' 3"	12' 3"
Overall Width	95"	95"	95"	101"	95"/101"	101"	101"
Interior Height	80"	80"	80"	80"	80"	80"	80"
Interior Width	91"	91"	91"	97"	91"/97"	97"	97"
CAPACITIES:							
Fresh Water Tank (Gal.)	52	52	52	52	52	90	90
Grey Holding Tank (Gal.)	40	40	40	45	45	45	45
Black Holding Tank (Gal.)	40	40	40	45	45	45	45
Water Heater w/DSI (Gal.)	6	6	6	10	10	10	10
LP Gas Tank (lbs.)	85	85	85	85	85	150	150
Fuel Tank (Gal.)	80	80	80	80	80	90	90
Furnace (BTU's)	35K	35K	35K	35K	40K	40K	40K

Chassis (Gas Models)

- Electronic Ignition
- Power Steering & Brakes
- High-Capacity Auto. Heater
- Tilt Steering Wheel
- Tag Axle System (8362, 8342)

Spartan Chassis (Diesel Models)

- Spartan EXP 2001, 19,000 lb. GVWR Chassis w/Cummins 6BT 5.9, 210HP @2500 RPM 520 ft.lb. Torque @1600 RPM Turbo-Charged Rear Mounted Diesel Engine
- Allison AT-542 4-Speed Automatic Transmission
- Air Over Hydraulic 15" Dia. Front & Rear Disc Brakes w/ Air Actuated, Spring-Applied Parking Brake
- Full Air-Ride Suspension
- Opt. 230 HP @ 2500 RPM, 605 ft. lb. Torque @ 1700 RPM, Turbo-Charged Rear Mounted Diesel Engine (w/6-Speed Allison World Transmission)

Deluxe Standard Features

- Auto Dash Air Conditioner
- Auto Cruise Control
- Wheel Covers
- AM/FM Cassette w/4 Spkrs.
- Monitor Panel
- Power Vent in Commode
- Converter w/Battery Charger
- Auxiliary Battery
- Generator Ready
- 115 lb. LP Tank (85 lb. on gas models)
- 19" Color TV in Front Overhead
- Carbon Monoxide Detector
- TV Antenna
- LP Gas Leak Detector
- Radial Tires
- Awning Rail
- Extraordinary Exterior Storage
- Tinted Windshield & Windows
- Drivers Door (Opt. on gas models, N/A on Diesel)

Your Dealer:

For further information and available floorplan options, contact your local dealer or Gulf Stream Coach, Inc. Gulf Stream Coach, Inc. reserves the right to make changes in prices, colors, materials, components and specifications and to discontinue models at anytime without notice or obligation. Gulf Stream Coach, Inc. assumes no responsibility for any error in type or print reproduction of specifications or floorplans in this brochure.
TP 20M 10/96 © 1996 Gulf Stream Coach, Inc. - Nappanee



GULF STREAM COACH, INC.

P.O. Box 1005 • Nappanee, IN 46550