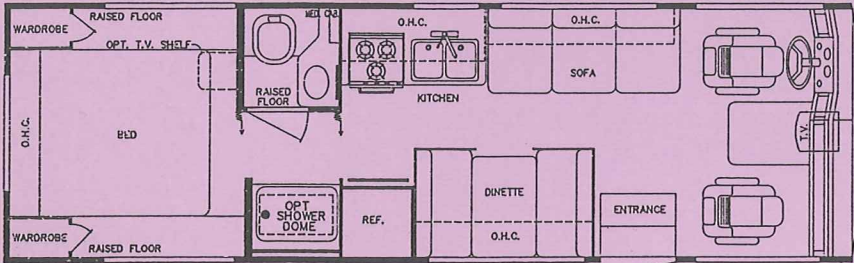


11/95

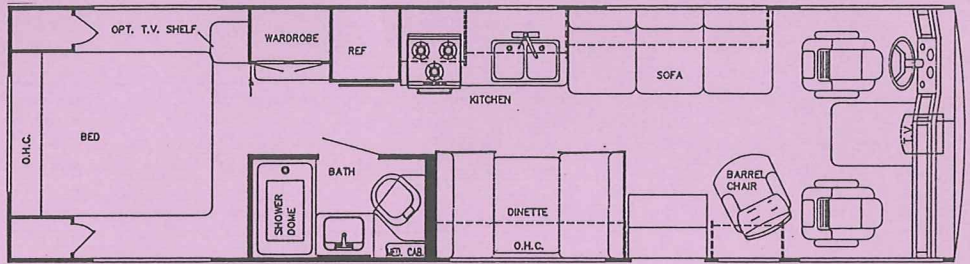
The All-New

SUN SPORT

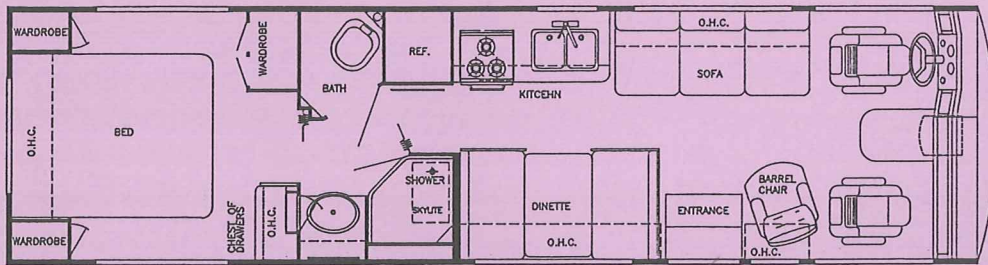
BY GULF STREAM®



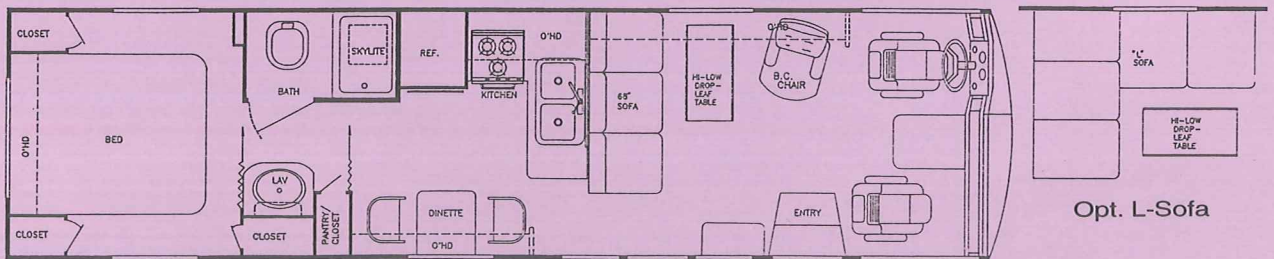
Model 8276 LT ONLY (Twin Bed Opt. Available)



Model 8314 LT OR LES (Twin Bed Opt. Available)



Model 8323 LT OR LES (Twin Bed Opt. Available)



Model 8330 LT OR LES (Twin Bed Opt. Available)

Opt. L-Sofa

Interior and Decor

- Self-Edged & Radius-Cornered Countertops
- Custom Padded Dash w/Illuminated Gauges
- Windshield Privacy Drape
- Deluxe Carpet w/Pad
- Deluxe Furniture
- 3-Way Driver Seat
- Coordinated Bedspread
- Decorative Mirror
- Generous Overhead Storage
- Extra Large Under Bed Storage

Exterior and Construction

- Tubular Steel Cage Construction on Sidewalls
- Welded Steel Truss System
- Vacuum-Bond Laminated Sidewalls
- Block Foam Insulation in Floor & Sidewalls
- Heated and Fully-Enclosed Holding Tanks
- Fully-Welded Steel Firewall
- Smooth Fiberglass Exterior
- Panoramic Windshield
- Tinted Windshield and Windows
- Outstanding Exterior Storage
- Deluxe Outside Mirrors
- Seamless Rubber Roof
- Ducted A/C, Roof Brick Insulation System (LES)

Bath and Water

- Demand Water System
- City Water Hook-Up
- Double Stainless Steel Sink
- Tub/Shower combination (most models)
- Marine Toilet
- Gravity Drains on Fresh Water Lines
- Skydome in Shower/Bath (most models)

For further information, contact your local dealer or Gulf Stream. Gulf Stream Coach, Inc. reserves the right to make changes in prices, colors, materials, components and specifications and to discontinue models at any time without notice or obligation. Gulf Stream Coach, Inc. assumes no responsibility for any error in type or print reproduction of specifications or floorplans in this brochure. TP 15M 11/95

MODEL	8276	8314	8323	8330
FORD CHASSIS (CID V8 Gas)	N/A	460	460	460
Wheelbase	N/A	190"	208"	208"
GVWR	N/A	15,200 lb.	15,200 lb.	17,000 lb.
Front Gross Axle Weight Rating	N/A	5,360 lb.	5,360 lb.	6,000 lb.
Rear Gross Axle Weight Rating	N/A	9,880 lb.	9,880 lb.	11,000 lb.
CHEVY CHASSIS (CID V8 Gas)	454	454	454	454
Wheelbase	158"	190"	208"	208"
GVWR	12,700 lb.	14,800 lb.	14,800 lb.	16,500 lb.
Front Gross Axle Weight Rating	4,880 lb.	5,300 lb.	5,300 lb.	5,500 lb.
Rear Gross Axle Weight Rating	7,500 lb.	10,000 lb.	10,000 lb.	11,000 lb.
*Exterior Length	27' - 8"	30' - 10"	31' - 9"	33' - 5"
*Exterior Height (with A/C)	11' - 3"	11' - 3"	11' - 3"	11' - 3"
Overall Width	94"	94"	94"	94"
Interior Height	78"	78"	78"	78"
Interior Width	91"	91"	91"	91"
*Fresh Water Tank	50 Gal.	50 Gal.	50 Gal.	50 Gal.
*Gray Holding Tank	40 Gal.	40 Gal.	40 Gal.	40 Gal.
*Black Holding Tank	40 Gal.	40 Gal.	40 Gal.	40 Gal.
Water Heater w/DSI	6 Gal.	6 Gal.	6 Gal.	6 Gal.
LP Gas Tank	85 lbs.	85 lbs.	85 lbs.	85 lbs.
Fuel Capacity (Ford/GM)	75/60 Gal.	75/60 gal.	75/60 Gal.	75/80 Gal.
Furnace (BTU's)	35,000	35,000	35,000	35,000

* -Approximate, and subject to change without notice.

Chassis

- GM - 454 CID V-8 Engine w/Electronically Shifted 4-Speed Automatic Transmission
- FORD - Super Duty w/460 V-8 and 4-Speed Automatic Transmission
- Electronic Ignition
- Power Steering and Brakes
- High Capacity Automotive Heater & A/C - w/R134 Environmental Refrigerant
- Tilt Steering Wheel
- Cruise Control

Appliances

- 3-Burner High-Performance Range
- Lighted, Power Range Hood
- 2-Door, 2-Way Refrigerator

Electrical Systems

- Easy-Access Dual Battery System
- 12-Volt, 45-Amp Converter
- Electric Supply Cord
- Electric Overload Protection
- Generator Compartment
- Automotive-Type, Color-Coded Wiring

Heating, Ventilation & Air Conditioning

- 35,000 BTU Ducted Furnace w/Elect. Ignition
- Pre-Wired for Ducted Roof A/C (LES only)

Deluxe Standard Features

- 19" Color TV w/Remote
- Microwave Oven
- 6 Gal. Elect. Ign. Water Heater
- TV Antenna w/Amp and Boost & 2 Jacks
- Spare Tire (Opt. on LT)
- Wheel Covers
- AM/FM Cassette Stereo w/4 Speakers
- Monitor Panel
- Generator Ready
- Converter w/Battery Charger
- Auto Start Switch