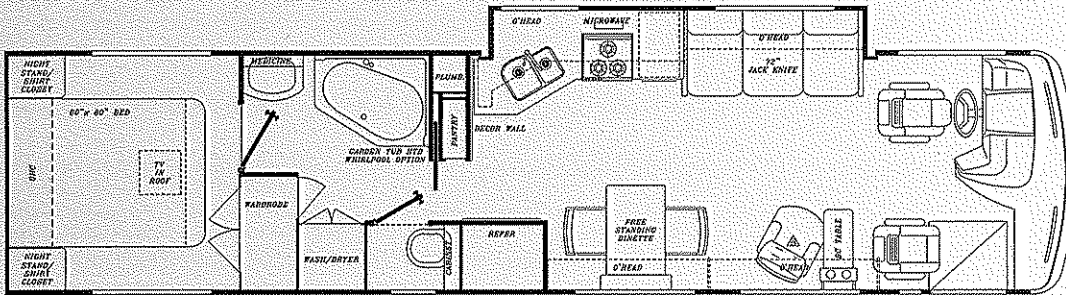


SCENIC CRUISER

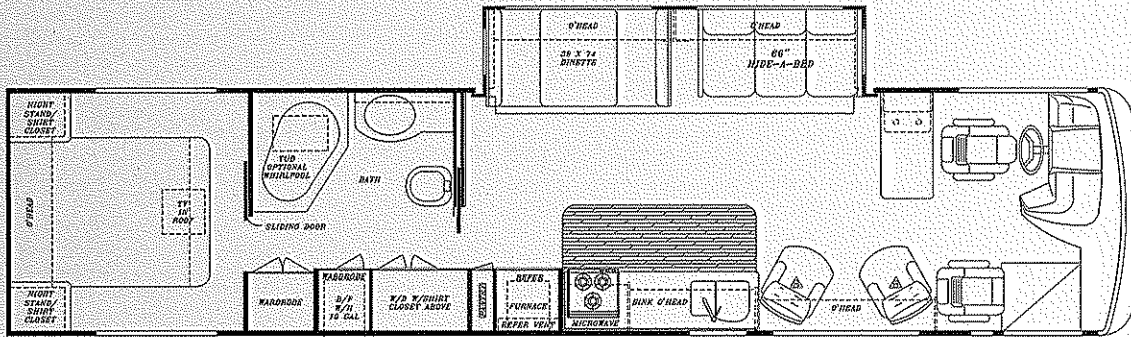


2001



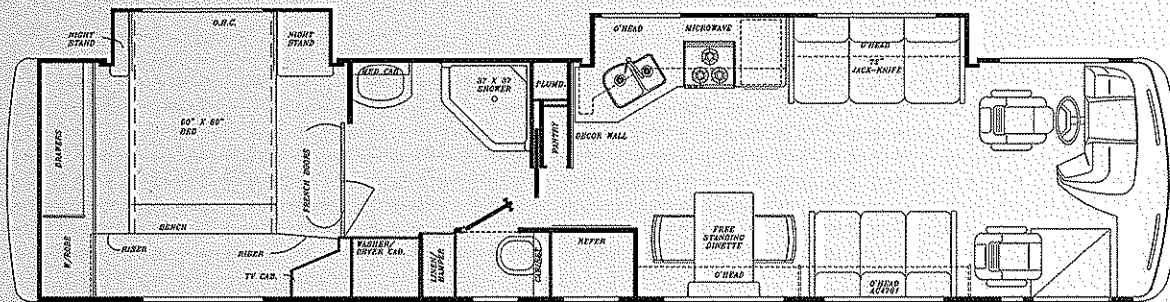
Model 8362

Engine (HP)	330
GVWR	31,000
Wheelbase	234"
Ext. Length	37'-6"
Ext. Height w/AC	12'-1"
Ext. Width	100"
Int. Height	80"
Int. Width	96"
Fresh	100 gal.
Grey	75 gal.
Black	75 gal.
Water Heater w/DSI	10 gal.
LP Gas Tanks	150 lbs.
Fuel Tank (Gal.)	100
Furnace BTU's	40,000



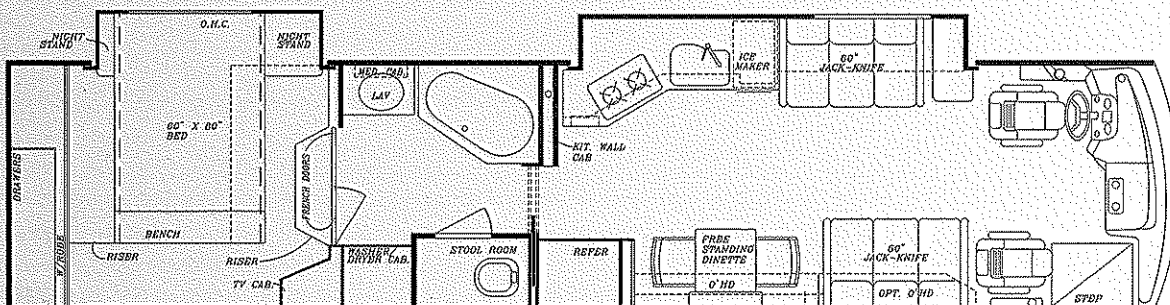
Model 8391

Engine (HP)	330
GVWR	31,000
Wheelbase	252"
Ext. Length	39'-0"
Ext. Height w/AC	12'-1"
Ext. Width	100"
Int. Height	80"
Int. Width	96"
Fresh	100 g.
Grey	75 gal.
Black	75 gal.
Water Heater w/DSI	10 gal.
LP Gas Tanks	115 lbs.
Fuel Tank (Gal.)	150
Furnace BTU's	40,000



Model 8404

Engine (HP)	330
GVWR	31,000
Wheelbase	262"
Ext. Length	40'-0"
Ext. Height w/AC	12'-1"
Ext. Width	100"
Int. Height	80"
Int. Width	96"
Fresh	100 gal.
Grey	75 gal.
Black	75 gal.
Water Heater w/DSI	10 gal.
LP Gas Tanks	150 lbs.
Fuel Tank (Gal.)	150
Furnace BTU's	25&40

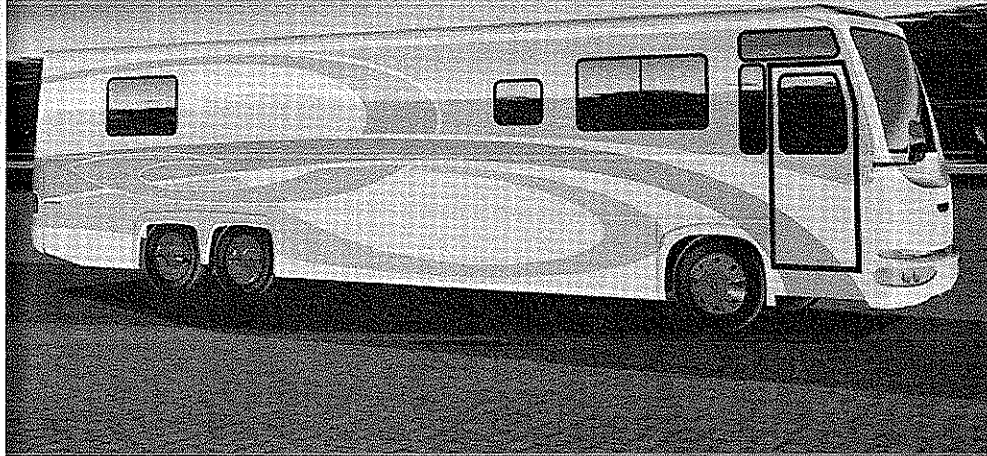


Model 8406

Engine (HP)	450
GVWR	45,200
Wheelbase	270"
Ext. Length	40'-0"
Ext. Height w/AC	12'-1"
Ext. Width	100"
Int. Height	80"
Int. Width	96"
Fresh	100 gal.
Grey	75 gal.
Black	75 gal.
Water Heater w/DSI	10 gal.
LP Gas Tanks	150 lbs.
Fuel Tank (Gal.)	150
Furnace BTU's	25&40

SPECIFICATION INFORMATION

SCENIC CRUISER



INTERIOR & DECOR

- Mirage Ivory Laminated Formica Cabinetry w/"Thermafoil" Doors
- High Gloss American Oak or Walnut Hardwood Interior (Opt.)
- Fabric-Covered Shelving in Cabinets
- Deep Overhead Cabinets in Slide-Outs
- Deluxe Solid Surface Countertops Throughout
- Deluxe Villa Furniture
- Villa Leather Pilot & Buddy Seats with Power Footrest and 6-Way Power Pedestals
- Deluxe Stain-Resistant Carpet w/Pad
- Hand Laid Ceramic Tile Floor in Kit. & Bath
- Day/Night Shades Throughout
- Deluxe Privacy Drapes for Cockpit
- Coordinated Bedspreads & Shams
- Expandable Dinette w/Solid Surface Top and (2) Fabric Chairs
- Color Coordinated Deluxe Window Boxes
- Queen Size Bed w/Deluxe Innerspring Mattress

APPLIANCES

- 3-Burner High-Output Recessed Range w/Covers
- 2-Door, 2-Way Refrigerator
- Microwave/Convection Oven w/Re-circulation Kit
- Lighted Power Range Hood
- 19" Color TV In Dash
- 13" Color TV in Bedroom
- VCR in Front Overhead
- TV Antenna w/Amp, Boost and 2 Jacks
- CB Antenna
- LP Gas Leak Detector
- Carbon Monoxide Detector

*NOTE: GCWR's are limited by hitch weight capacities used by the manufacturer. Gulf Stream installs a 5,000 lb. hitch. Check your Spartan Owners Manual for additional towing weight capacities.

EXTERIOR & CONSTRUCTION

- Large One-Piece Panoramic Windshield
- One-Piece, Radiused Rubber Roof
- Back-Up Camera w/Weatherproof Cover
- Deluxe Front Door w/Screen & Kick plate
- 5,000 lb. Trailer Hitch

Chrome Package:

- Chrome Front Spotlight w/Power Controls
- Chrome Front Air Horns
- Chrome-Like Kick plate at Front Entry Door
- Chrome Exhaust Tips
- Chrome Exterior Vents for Radiator & Engine Compartment Doors

- Strong 1-1/2" x 1-1/2" Tubular Metal Const.
- Laminated Tubular Steel Floor w/Metal Underbelly and Weyerhaeuser Decking
- Super-Structure Steel Sub-Floor Sys. (3"x1-1/2")
- Laminated 2" Thick Floor & Wall Construction
- 1-1/2" Block Foam Insulation in Floor & Walls
- Steel Sidewall-to-Roof Transition Member
- Hinged & Insulated Ext. Storage Doors
- High-Density Block Foam Insulation Throughout
- Thick 4-1/2" Block Foam Roof Insulation
- Side-to-Side, Carpeted and Lighted Exterior Pass-Through Storage
- Full Fiberglass Front and Rear Caps
- Fiberglass Integrated Bumpers
- Full Body Undercoating
- Super-Slick Gel-Coat Fiberglass Exterior
- Hydraulic Slide Power Unit w/Manual Override

HEATING, VENTILATION & A/C

- Thermopane Windows Throughout
- Dual 13,500 BTU Ceiling Ducted A/C
- Built-In Overhead Defrost Fans
- In-Dash A/C and Heater w/Electronic Driver and Passenger Controls
- Heated & Insulated Basement with Enclosed Holding Tanks
- Insulated Ducted Furnace w/Electronic Ignition

BATH & WATER

- Super-Flow Manifold Water Distribution System
- Deep Solid Surface Kitchen Sink w/Flexible Sprayer
- Gold Neo-Angle Shower Surround
- Sky Dome in Shower Area
- Mirrored Medicine Cabinet
- Whirlpool Tub/Bath (Option)
- Storage Cabinet in Commode Area
- Porcelain Commode w/Spray Nozzle
- Washer/Dryer Prep
- Solid Surface Sink Covers in Kitchen
- Water Purification System
- Holding Tank Power Flush System
- Solid Surface Lav Top w/Molded Sink

DELUXE STANDARD FEATURES

- Auto Dash Air Conditioner
- Auto Cruise Control
- Electric Step Cover
- Monitor Panel in Range Hood
- 150 lb. LP Tank (36' models) *N/A 8391
- Tinted Windshield & Windows
- Wall Safe

POPULAR OPTIONS

- Deluxe Exterior Paint Upgrade
- 4-Door Flush-Mount Refrigerator
- Whirlpool Jets in Tub
- Satellite Dish System
- Satellite in Motion System
- Fully Automatic Hydraulic Coach Levelers
- Storage Compartment Slide Trays
- Exterior Entertainment Center
- Combo Vented Washer/Dryer
- Icemaker in Kitchen Cabinet
- Icemaker in 4-Door Refrigerator
- 50 lb. Freezer on Slide Tray in Basement
- 7.5 Onan Quiet Diesel Generator

CHASSIS

- SPARTAN Mountain Master Chassis, Cummins 8.3 Litre, Turbo-Charged 330 HP Diesel Engine, 950 ft. lb. Torque, Side-Mounted Radiator, and Independent Front Suspension (8362, 8391, 8404)
- SPARTAN K2 Chassis w/tag, Cummins 11 Litre, Turbo-Charged 450 HP Diesel Engine 1450 ft. lb. Torque (model 8406 only)
- C-Channel Type, Raised-Rail Steel Chassis Frame
- Anti-Lock Brake System
- Air Brakes w/Pure Air Plus Heated Air Dryer
- Full Air-Ride Suspension w/Auto Leveling System
- Allison 6-Speed Electronically Shifted Auto. Trans.
- Alcoa Aluminum Wheels w/Radial Tires

For further information and available floorplan options, contact your local dealer or Gulf Stream Coach, Inc. Gulf Stream Coach, Inc. reserves the right to make changes in prices, colors, materials, components and specifications and to discontinue models at any time without notice or obligation. Gulf Stream Coach, Inc. assumes no responsibility for any error in type or print reproduction of specifications or floorplans in this brochure. SCG 10M 7/00 © 2000 Gulf Stream Coach, Inc. - Nappanee, Indiana



P.O. Box 1005 • Nappanee, IN 46550
www.gulfstreamRV.com