

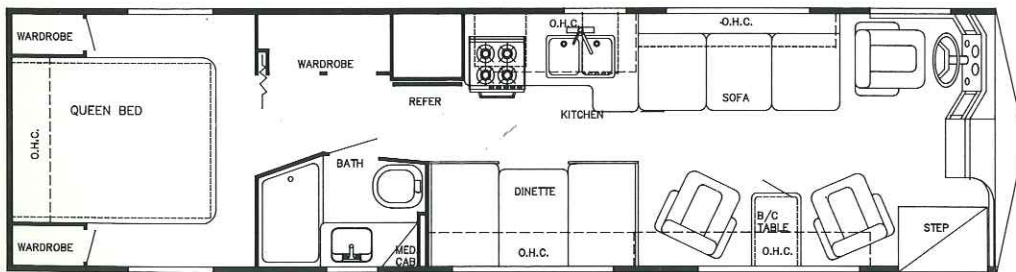


Introducing the All New

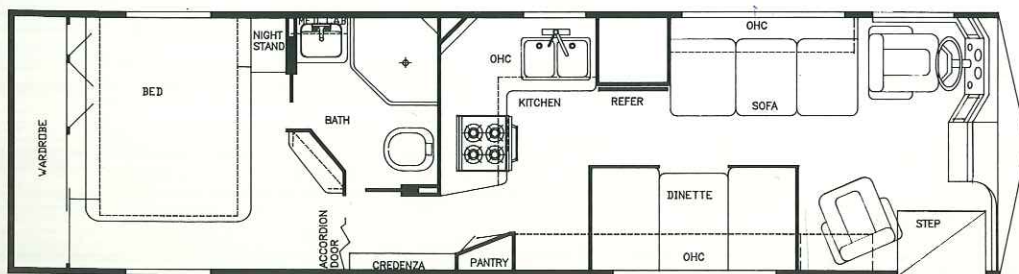
Sun Voyager DIESEL

by Gulf Stream

FLOORPLANS



Model 8313



Model 8324

Sun Voyager DIESEL

by Gulf Stream

Standard Specifications

Interior and Decor

- Self-Edged & Radius-Cornered Countertops
- Custom Padded Dash w/Illuminated Gauges
- Windshield Privacy Drape
- Deluxe Carpet w/Pad
- Deluxe Furniture
- 3-Way Driver Seat
- Deluxe Door & Window Drapes
- Coordinated Bedspreads & Shams
- Oak-Framed Decorator Mirror
- Generous Overhead Storage

Exterior and Construction

- Heated & Fully Enclosed Holding Tanks
- Super Structure Steel Truss Floor System
- Tubular Steel Cage Construction
(16 Gauge, 1-1/2" X 1-1/2")
- Laminated Floors w/Metal Underbelly
- R-7.5, 1-1/2" Block Foam Insulation in Floor,
Walls and Roof
- Fully-Welded Steel Firewall
- Sealed Perimeter & Engine Compartment
- Laminated Fiberglass Exterior
- Panoramic Windshield
- Tinted Windshield & Windows
- Outstanding Exterior Storage
- Deluxe Outside Mirrors
- Radius Rubber Roof w/"Soft Touch"
Carpeted Ceiling

Electrical Systems

- Easy-Access Dual Battery System
- 12-Volt, 45-Amp Converter w/Battery Charger
- Electric Supply Cord
- Electric Overload Protection
- Generator Compartment
- Automotive-Type, Color-Coded Wiring
- Quad Headlight System

Bath and Water

- Dual Holding Tanks - Approx. 100 Gal.
- Fresh Water Tank - Approx. 42 Gal.
- Demand Water System
- City Water Hook-Up
- Double Stainless Steel Sink
- Tub/Shower Combination
- Marine Toilet
- Gravity Drains on Fresh Water Lines

Appliances

- 4-Burner Range
- Lighted, Power Range Hood
- 2-Door, 2-Way Refrigerator
- Microwave Ready

Heating, Ventilation & Air Cond.

- 30,000 BTU Ducted Furnace w/Electronic Ign.
- Pre-Wired for Roof Air Conditioning

Deluxe Standard Features

- Auto Dash Air Conditioner
- Auto Cruise Control
- Spare Tire
- Wheel Covers
- AM/FM Cassette w/4 Speakers
- Monitor Panel
- Emergency Start Switch
- Power Vent in Commode
- Generator Ready
- 85 lb. LP Tank

Chassis

- Spartan EC 2000, 16,000 lb. GVWR Chassis w/
Cummins 6BT 5.9, 160 HP @ 2500 RPM, 400 ft.
lb. Torque @ 1700 RPM, Turbo Charged Rear
Mounted Diesel Engine
- Allison AT-542 4-Speed Automatic Transmission
- Dana Front and Rear Axles w/Tapered Leaf
Springs and Shock Absorbers
- 105 Amp DELCO® Alternator
- 1125 CCA Battery
- Air Over Hydraulic 15" Dia. Front and Rear Disc
Brakes w/Air Actuated, Spring Applied Parking
Brake
- Power Steering and Brakes
- Gasoline Tank: Approx. 60 Gal.
- 3.73:1 Rear Axle Ratio
- High Capacity Automotive Heater
- Tilt Steering Wheel
- Wheel Base - 190"
- Exterior Length - Approx. 31' (8313) -Approx. 32' (8324)
- Interior Height - 6'-8"
- Exterior Height - 10'-3"



Gulf Stream Coach, Inc. P.O. Box 1005 • Nappanee, IN 46550

Your Dealer

For further information and available floorplan options, contact your local dealer or Gulf Stream Coach, Inc. Also ask about our Friendship, Sun Clipper, Sun Stream 2000, Sun Voyager, Gulf Stream 2000 and Innsbruck Class A motorhomes, Conquest and Ultra Class C mini-motorhomes and micro-mini-motorhomes, Kingsley fifth wheels, Conquest and Innsbruck travel trailers, fifth wheels, and travel parks, Yellowstone travel trailers and Conquest and Monogram vans.

Gulf Stream Coach, Inc. reserves the right to make changes in prices, colors, materials, components and specifications and to discontinue models at any time without notice or obligation. Gulf Stream Coach, Inc. assumes no responsibility for any error in type or print reproduction of specifications or floorplans in this brochure.