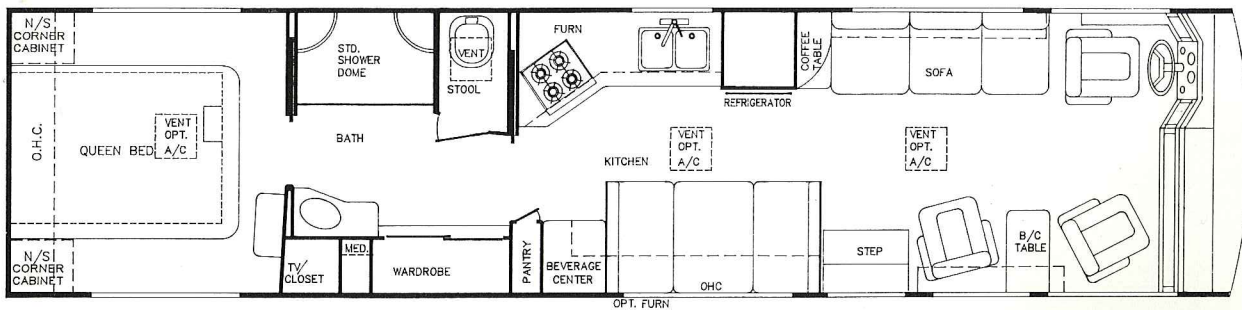


9/19/84

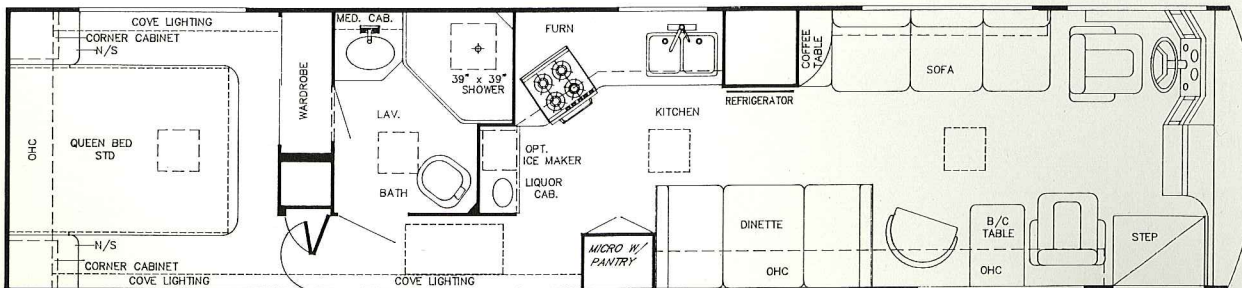


*Friendship*

102" Wide-Body  
**DIESEL**  
BY GULF STREAM®



**Model 8380**



**Model 8381**



# Friendship

## 102" Wide-Body DIESEL BY GULF STREAM®

### Standard Specifications

#### Interior and Decor

- Island KOA, High-Impact/High-Pressure, Roll-Formed, Laminate Cabinetry w/Hardwood Frames
- Raised Island KOA, High-Impact/High-Pressure, Roll-Formed, Laminate Cabinet Doors
- Laminated Formica Paneling
- Metal Drawer Guides w/Nylon Rollers
- Radius Cabinet & Wall Corners
- Fabric-Covered Shelving
- Cultured Marble Countertops
- Vertical Privacy Drape
- Custom Padded Dash w/Illuminated Gauges
- Deluxe Furniture
- 3-Way Driver & Passenger Seats
- Deluxe Carpet w/Pad
- Ceramic Tile Floor in Kitchen (Wood Plank Floor Opt.)
- Day/Night Shades Throughout
- Island KOA, High-Impact/High-Pressure Roll-Formed, Laminate Lambrequins
- Coordinated Bedspreads & Shams
- Cedar-Lined Wardrobe
- Beveled Glass Decorator Mirrors in Living Area, Bedroom & Bathroom
- Generous Overhead Storage
- Safe in Pedestal of Passenger Seat

#### Exterior and Construction

- Tubular Steel Cage Construction (16-Gauge, 1 1/2" x 1 1/2")
- Laminated Floors w/Metal Underbelly
- Super-Structure Steel Floor System
- Laminated 2" Thick Floor, Wall & Roof Construction (50% Thicker Than Most Competitors)
- R-7.5, 1 1/2" Block Foam Insulation in Floor, Walls & Roof
- Sidewalls Lag-Bolted Every 8" or Less to Floor Structure
- Fiberglass Integrated Bumper
- One-Piece, Rear Fiberglass Cap
- Fully-Welded Steel Firewall
- Sealed Perimeter & Engine Compartment
- One-Piece Rubber Roof
- Roof Lag-Bolted Every 8" or Less to Sidewalls
- Super-Slick Laminated Fiberglass Siding
- Panoramic Windshield
- Extra-Large Tinted Windshield & Windows
- Color-Coordinated Paint Scheme w/Contemporary Painted Graphics & a Clear Coat Finish
- Outstanding Side-to-Side, Carpeted, Lighted Exterior Storage
- Back-Up Alarm
- Side Docking Lights
- Convenient Rally Hook-Up System

#### Electrical System

- Slide-Out Chassis and Coach Batteries
- 12-Volt, 75-Amp Converter w/Battery Charger
- Electrical Supply Cord -- 50 Amp (30 Amp Cord on CSA)
- Electric Overload Protection
- Automotive-Type Color-Coded Wiring
- AM/FM Stereo Cassette in Dash and Bedroom w/Four Speakers
- Quad Headlight System
- Lighted Entry Way and Aisle Lights
- Directional Reading and Map Lights
- Positive Battery Shut-Off Switches
- Dual Electric Horns
- Dual Electric Step
- 7.5 Onan Diesel Generator (Opt.)

#### Bath and Water

- Dual Holding Tanks -- Gray - 35 Gal, Black - 35 Gal (8380) / Gray - 35 Gal., Black - 35 Gal. (8381)
- Fresh Water Tank -- Approx. 48 Gal.
- Demand Water System
- City Water Hook-Up
- Double-Bowl Porcelain Sink
- Sink Covers
- Shower w/Gold-Tone Shower Stall and Fixtures
- Deluxe Padded Stool w/Sprayer
- Mirrored Medicine Cabinet
- Gravity Drains on Fresh Water Lines
- 6 Gal. DSI Water Heater (10 Gal. Opt.)
- Superflow Water Manifold Distribution Sys.

#### Appliances

- 3-Burner, High-Output Porcelain Range Top
- Lighted Power Range Hood w/Monitor Panel
- Large, 2-Way, Flush-Mounted Double-Door Refrigerator
- Microwave/Convection Oven
- Telephone
- 19" Color TV w/VCR

#### Heating, Ventilation and Air Conditioning

- 40,000 BTU Ducted Furnace
- Optional 25,000 BTU Second Furnace
- Two 13,500 BTU Roof Air Conditioners

#### Deluxe Standard Features

- Auto Dash Air Conditioner
- Auto Cruise Control
- Power Vent in Bath
- Auxiliary Batteries
- 115 Lb. LP Tank

See Reverse Side For Floor Plans

#### Spartan Diesel Chassis

- Channel-Type, 8" x 3 1/2" x 1/4", Solid, One-Piece Frame Rails, Fastened w/Grade 8 Bolts and Locknuts
- Engine Roll-Out Feature
- Stemco Seals -- Bearings Lubricated w/Oil Instead of Grease
- 14-Gauge Ultra-High Temperature Wire w/Circuit Description Every 3"
- V-Pad Engine Mount Greatly Reduces Vibration
- Side-Mounted Rochester Fuel Gauge
- Air Brakes w/Bendix Westinghouse AD 4 Air Dryer
- Self-Leveling Air Suspension
- Cummins 6 CTA 8.3 Diesel Engine w/250 HP, 660 Ft./Lb. Torque (Also Available w/ 300 HP, 820 Ft./Lb. Torque Optional)
- Turbo Charged and After Cooled
- Allison MD 3060P 6-Speed Electronically Shifted Automatic Transmission
- Tilt and Telescoping Douglas Steering Column
- High Capacity Automotive Heater
- Four 10-Stud, 11.25 BC Alcoa Aluminum Wheels w/Radial Tires
- 4.63:1 Rear Axle Ratio  
Wheel Base: 252"  
Approx. Exterior Length : 38'  
Exterior Width -- 102"  
Interior Height -- 6' 6 3/4"  
Coach Body Height -- 10'9" Approx.  
Fuel Tank Approx. 100 Gal.

For further information and available floor plan options, contact your local dealer or Gulf Stream Coach, Inc. Also ask about our full line of Class A, Class C travel trailers, fifth wheels and vans. Gulf Stream Coach, Inc. reserves the right to make changes in prices, colors, materials, components and specifications and to discontinue models at any time without notice or obligation. Gulf Stream Coach, Inc. assumes no responsibility for any error in type or print reproduction of specifications or floorplans in this brochure.



*Gulf Stream Coach, Inc.*

P.O. Box 1005 • Nappanee, Indiana 46550

Your Dealer