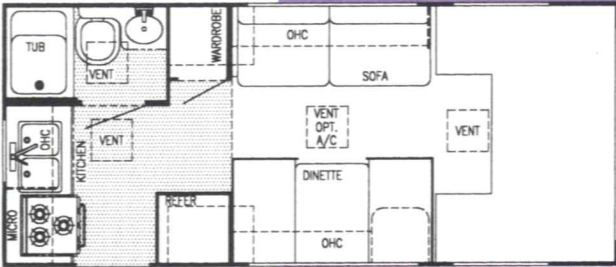
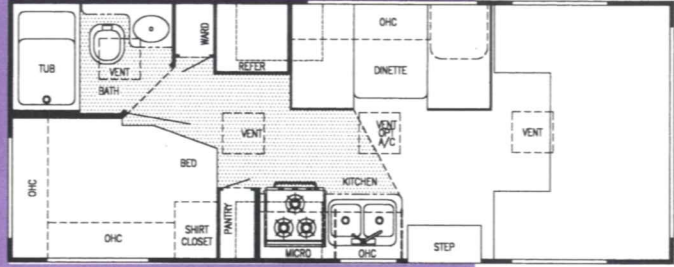


CONQUEST LE[®]

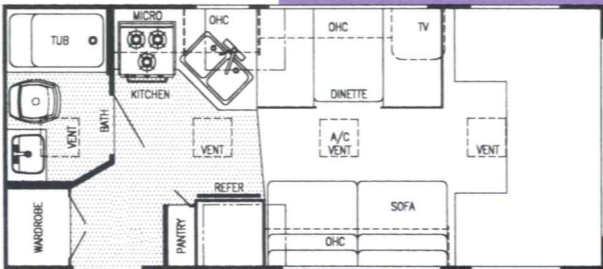
GULF STREAM



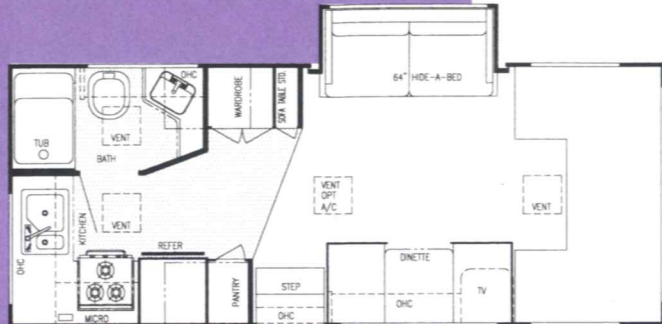
Model 6200



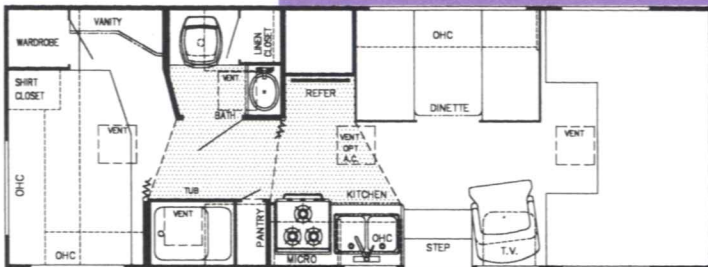
Model 6210



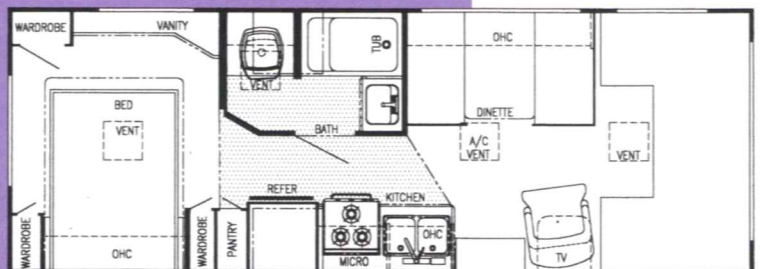
Model W6211



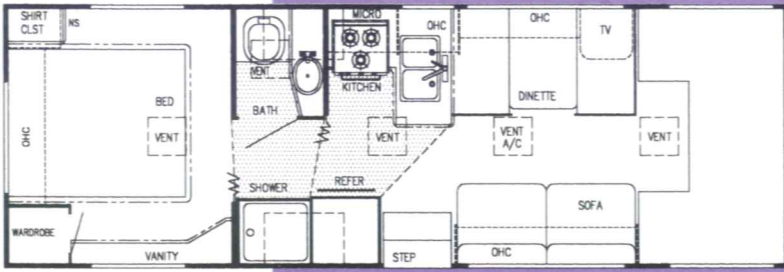
Model W6236



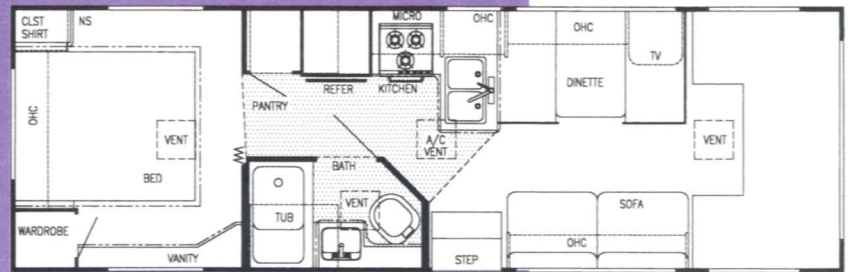
Model W6242



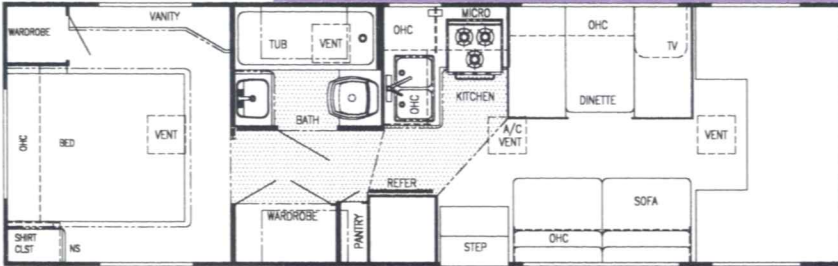
Model W6265



Model W6272 (Twin Beds or Bunks Opt.)



Model W6293 (Twin Beds or Bunks Opt.)



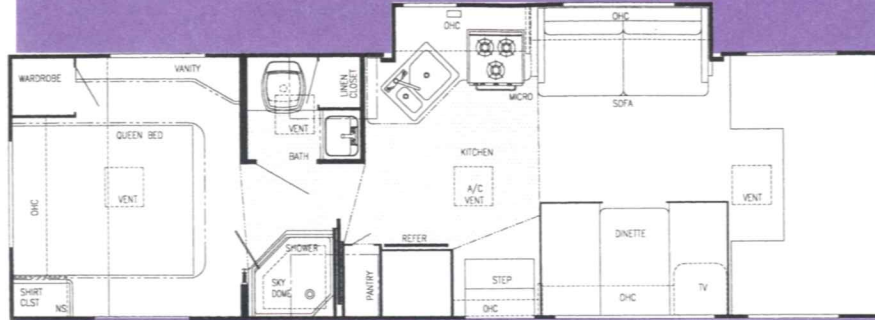
Model W6294 (Twin Beds or Bunks Opt.)



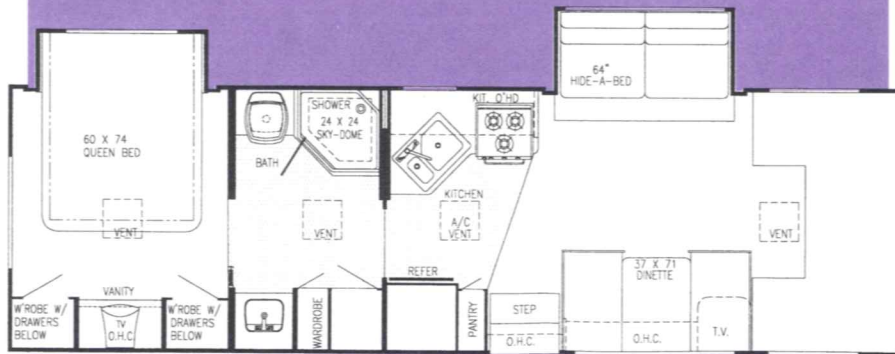
Model W6301 (Twin Beds or Bunks Opt.)

CONQUEST LE[®]

GULF STREAM



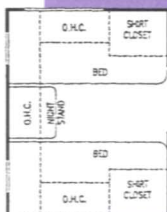
Model 6313 - Kitchen Slide-Out



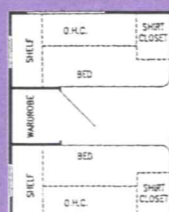
Model 6302 - Double Slide-Out

OPTIONS

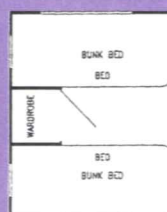
Twin Beds (Nightstand)



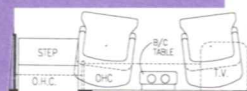
Twin Beds (Wardrobe)



Bunk Beds



Barrel Chairs



LIMITED EDITION

By GULF STREAM®

Standard Specifications

Interior and Decor

- Approx. 6'-5" Interior Height (Most Models)
- Stile Constructed Cabinetry
- Natural Oak Frame Raised Panel Cabinet Doors (in galley)
- Privacy Curtain Cab
- Deluxe Carpet w/Pad
- Generous Overhead Storage
- 3-Way Driver & Passenger Seat
- Coordinated Bedspreads & Shams
- Decorator Curtains & Shades w/Valances
- Brass Accent Trim on Overhead Doors
- Interior Decorative Clock
- Rubber Entry Step
- Queen Size Bed, Cab-Over
- Power Vent in Commode
- Tile Tub Surround
- Mini Blinds Kitchen
- Hydraulic-Operated Glide Out Room
(6236, 6313, 6302)

Electrical Systems

- Easy Store 25' Elect. Power Cord
- Overhead Reading Lights
- 110-Volt Receptacles
- Ground Fault Circuit Interrupter
- Well Illuminated Interiors
- Outside Receptacle
- TV Antenna w/Amp & Boost
- Auxiliary Battery
- Converter w/Charger (45 Amp)
- Generator Prep
- AM/FM Cassette w/4 Speakers
- Monitor Panel
- Convection Oven (Opt.)

Exterior and Construction

- Welded Aluminum Cage Construction
- 4-Ply Laminated Walls, Roof & Floor
- Dura-Tech Fiberglass Exterior
- Radiused Laminated Rubber Roof w/ Heliarc-Welded Aluminum Rafters
- Exclusive Molded Roof Brick Insulation System w/Bubble Wrap Duct System
- Hydraulic Pump Override System
- Tubular Steel Floor
- Laminated Floor w/ Metal Underbelly
- Foamed, Sealed & Undercoated
- Full Basement Storage (most models)
- Distinctive Exterior Graphics
- Expansive Radius Slider Windows
- Hose Storage Bumper
- Front Cab-Over Window
- Outside Grab Handle
- Porch Light • Chrome Bumper Cover
- Aluminum Running Boards
- Dead Bolt on Entry door
- Spare Tire Carrier
- Roof Rack & Ladder
- Bumper Jack (6313 only)

Bath and Water

- Demand Water System
- City Water Hook-Up
- Tub/Shower Combo
- Lavatory w/Base Cabinet Storage
- Bath Convenience Accessories
- Skydome in Shower (6301)

Ford Chassis

- 6.8L, V-10 Engine
- E-30 Chassis (Up to 26')
- E-40 Super Duty Chassis (27' & above)
- 4 Speed Auto. Overdrive Trans.
- Tilt Wheel Steering
- Power Brakes & Steering
- Deluxe Exterior Mirrors
- Radial Tires
- Cruise Control
- Gas Tank - Approx. 35 Gal. (21')
Approx. 55 Gal. (24' & up)
- FORD Turbo Diesel Chassis (Opt.)

Appliances

- 3-Burner Range
- Large 2-Way Dbl. Door Refer.
- Microwave Installed
- 6 Gal. Elect. Ign. Water Heater
- 25,000 BTU Furnace - most models
(30,000 BTU - 30' & above)
- 13,500 BTU Roof Air
- Large LP Gas Tank

Popular Options

- Outside Entertainment Center
- Sliding Battery Tray
- Battery Disconnects
- Heated and Remote Mirrors
- Cabover Entertainment Center
- Chevrolet Chassis (6200, 6210, 6242, 6236, 6265)

For more information, contact your local dealer or Gulf Stream. Gulf Stream Coach, Inc., reserves the right to make changes in prices, colors, materials, components and specifications and to discontinue models at any time without notice or obligation. Gulf Stream Coach, Inc., assumes no responsibility for any error in type or print reproduction of specifications or floorplans in this brochure. TP 10M 3/98

| MODEL | Chassis | Wheel Base | GVWR | *Length | *Height (w/A/C) | *Black | *Gray | *Fresh | *Basement Storage | LP Tank |
|-------|----------------------|------------|--------|-----------|-----------------|--------|-------|--------|-------------------|---------|
| 6200 | Ford E-30 V-10 | 138 | 10,500 | 20' - 10" | 10' - 7" | 19 | 19 | 20 | N/A | 41 lb. |
| 6210 | Ford E-30 V-10 | 138 | 10,500 | 22' - 4" | 10' - 9" | 16 | 20 | 29 | N/A | 41 lb. |
| 6211 | Ford E-30 V-10 | 138 | 10,500 | 22' - 4" | 10' - 9" | 25 | 20 | 32 | N/A | 41 lb. |
| 6236 | Ford E-30 V-10 | 176 | 11,500 | 24' - 2" | 11' - 1" | 44 | 24 | 38 | N/A | 41 lb. |
| 6242 | Ford E-30 V-10 | 176 | 11,500 | 25' - 4" | 10' - 9" | 25 | 20 | 38 | N/A | 41 lb. |
| 6265 | Ford E-30 V-10 | 176 | 11,500 | 26' - 7" | 10' - 9" | 25 | 20 | 36 | N/A | 41 lb. |
| 6272 | Ford Super Duty V-10 | 186 | 14,050 | 28' - 3" | 11' - 3" | 46 | 39 | 47 | 95.3 cu. ft. | 68 lb. |
| 6293 | Ford S.D. V-10 | 208 | 14,050 | 29' - 4" | 11' - 3" | 39 | 39 | 39 | 111.4 cu. ft. | 68 lb. |
| 6294 | Ford S.D. V-10 | 208 | 14,050 | 30' - 1" | 11' - 3" | 39 | 39 | 39 | 111.8 cu. ft. | 68 lb. |
| 6301 | Ford S.D. V-10 | 208 | 14,050 | 30' - 8" | 11' - 3" | 46 | 39 | 47 | 107.3 cu. ft. | 68 lb. |
| 6313 | Ford S.D. V-10 | 208 | 14,050 | 30' - 8" | 11' - 3" | 46 | 39 | 39 | 74.2 cu. ft. | 68 lb. |
| 6302 | Ford S.D. V-10 | 208 | 14,050 | 31' - 4" | 11' - 3" | 33 | 33 | 47 | t.b.a. | 68 lb. |

* - Approximate, and subject to change without notice.