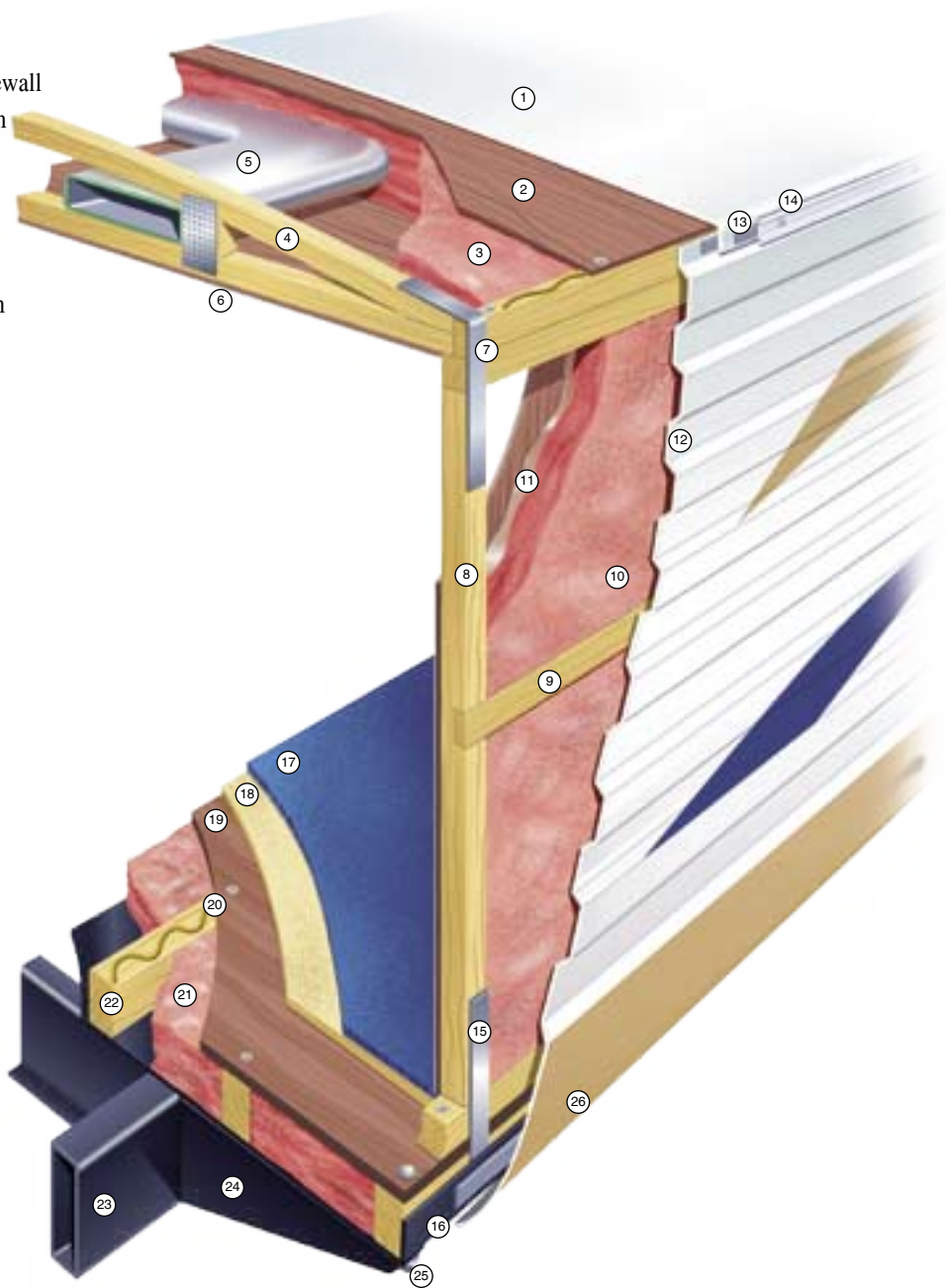


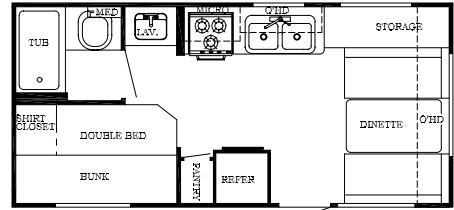
SUPERIOR CONSTRUCTION

1. One-Piece, Seamless Rubber Roof with 12 Year Warranty
2. Strong Wood Roof Decking, Glued and Screwed
3. Thick Blanket of Fiberglass Insulation
4. 4-1/4" Residential Style Bowed Roof Truss System
5. Insulated Air Conditioning Duct System with Radius Corners for Improved Air Flow
6. Interior Ceiling Board
7. Galvanized Steel Straps - Used to Increase the Roof-to-Sidewall Transition Strength and Solidify our Uni-Body Construction
8. Sturdy 2 x 2 Wood Sidewall Construction, 16" On Centers (Walls are always set on the floor, not next to it, for maximum strength, and screwed into place)
9. Dadoed Belt Rail Construction Through the Middle of the Side and End Walls Provides Additional Uni-Body Strength
10. Thick Blanket of Fiberglass Insulation, Hand-Cut and Fit for Long Lasting Energy Efficiency
11. Glue Used to Bond Hand Cut Insulation to Interior Wall Board - To Eliminate Possible Slipping or Movement
12. Exterior Aluminum Siding with Baked Enamel Finish
13. Butyl Caulking for Superior Seal & Less Black Streaks
14. Drip Rail/Awning Rail, Screwed to Roof Framing - Helps Keep Unit Clean
15. Galvanized Steel Straps - Used to Increase the Sidewall-to-Floor Transition Strength and Solidify our Uni-Body Construction
16. Tough Poly Max Underbelly Wrapped Up Sides and Ends, Protects Against Moisture and Road Debris
17. Plush, Durable Residential-Style Carpeting
18. Thick Foam Carpet Padding
19. 5/8" Floor Decking Screwed and Glued
20. Floor Decking Glued and Screwed to Floor Joists
21. Thick Blanket of Fiberglass Insulation
22. Sturdy 2 x 3 Wood Floor Joist System, 13" or Less O.C.
23. 2 x 6 Tubular Steel Frame (up to 30')
8" I-Beam Frame (32' and up)
24. Full Width Steel Outriggers - Superior Strength & Support
25. Steel Bolts Secure Floor To Steel Outriggers
26. Exterior Metal is Screwed into Floor Framing From Side, Not Stapled from the Bottom, Preventing Leaks

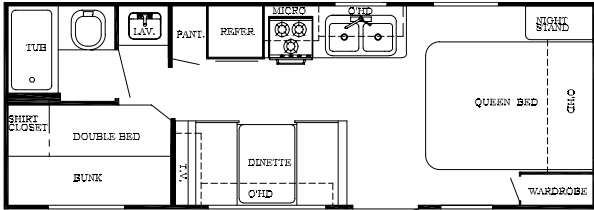


BUILT TO LAST!

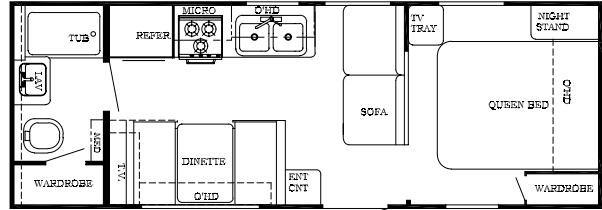
LITE SERIES TRAVEL TRAILERS



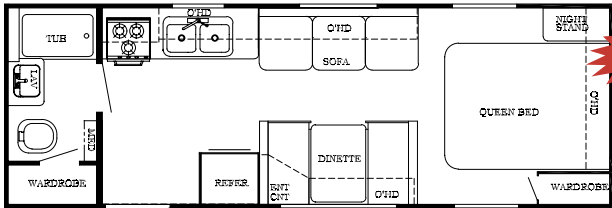
Model 19 FDL
Base Weight 3462 Lbs.



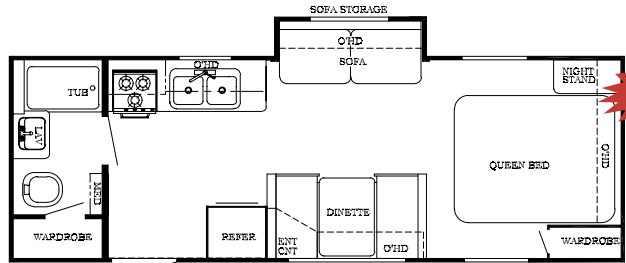
Model 24 BHL
Base Weight 4244 Lbs.



Model 24 RBL
Base Weight 4244 Lbs.

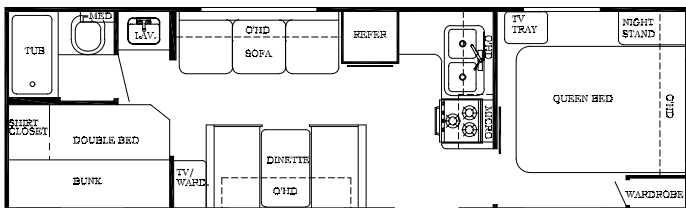


Model 24 FBL
Base Weight 4380 Lbs.

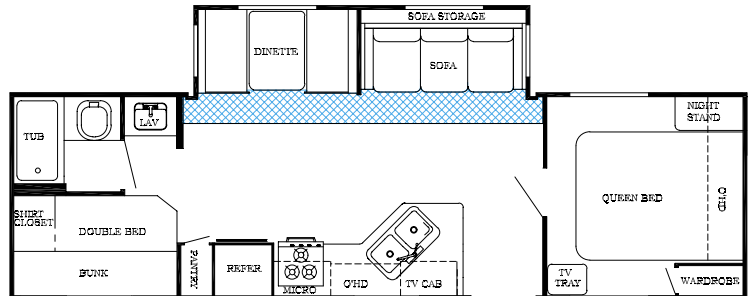


Model 24 FBS
Base Weight 4744 Lbs.

TRAVELER SERIES TRAVEL TRAILERS



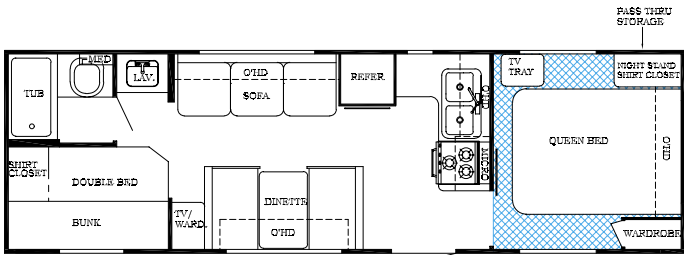
Model T-275 FB
Base Weight 5034 Lbs.



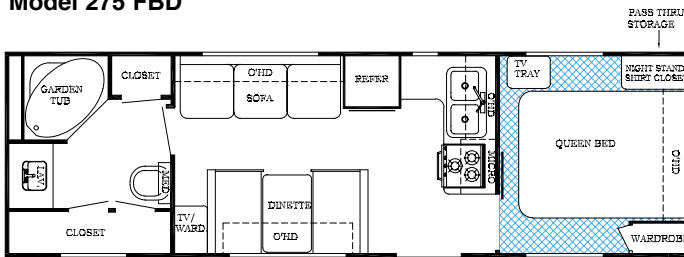
Model T-30 BHS
Base Weight 6622 Lbs.

Gulf Stream's Lite and Traveler Series travel trailers and fifth wheels offer the customer all of our top quality construction without the added cost of the luxury items that are not always desired. This practice reduces both the overall weight and price making Gulf Stream's Lite and Traveler Series one of the top values available in the recreational vehicle market today.

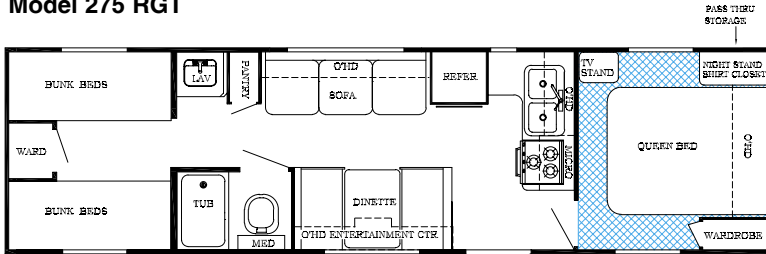
NON-SLIDE TRAVEL TRAILERS



Model 275 FBD



Model 275 RGT

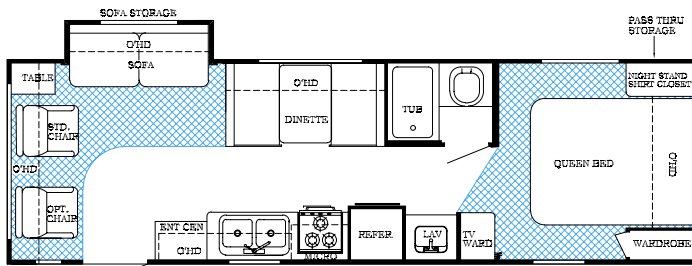


Model 295 DBR

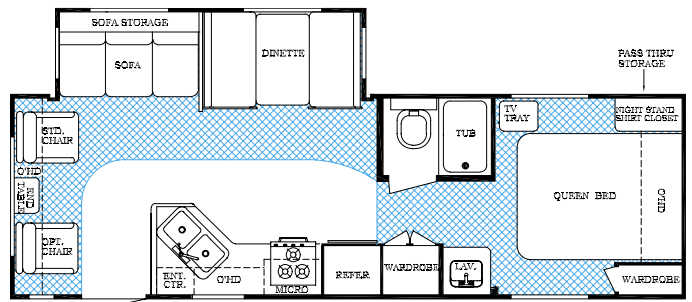


Double bed with overhead bunk is standard.

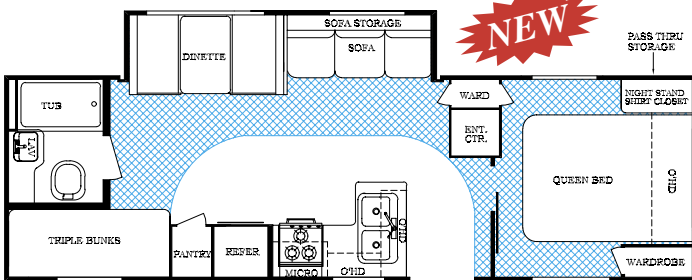
SLIDE-OUT TRAVEL TRAILERS



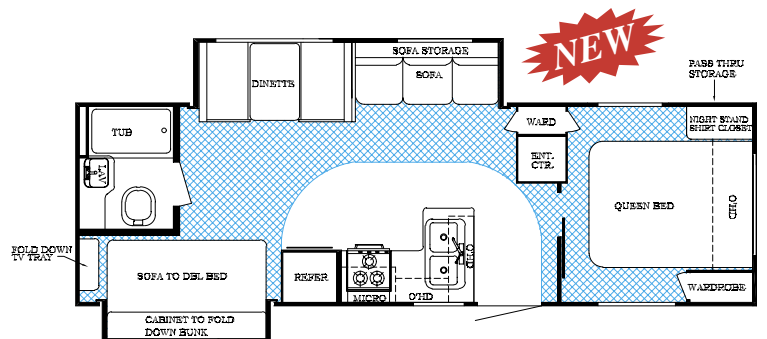
Model 26 BWS



Model 26 RLS

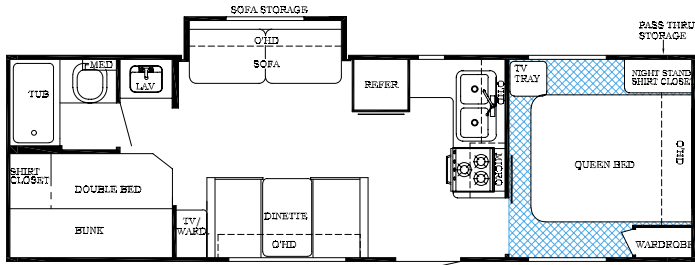


Model 265 TBS

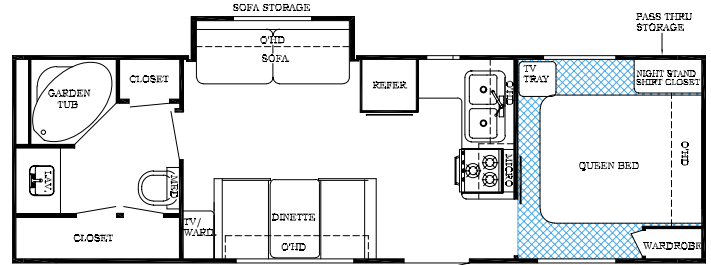


Model 265 BHS

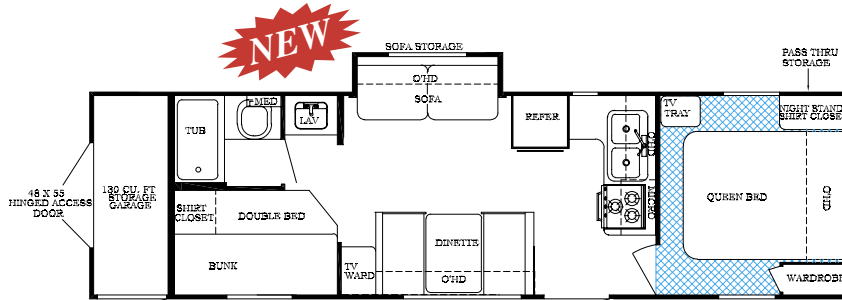
SLIDE-OUT TRAVEL TRAILERS CONTINUED



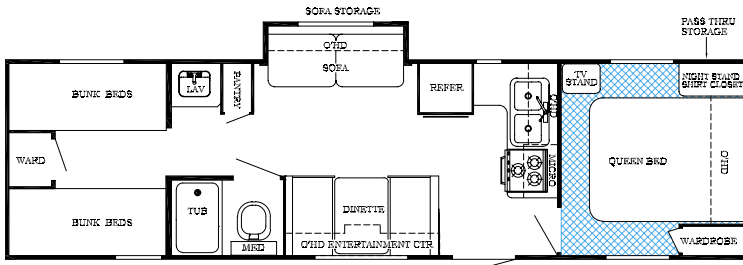
Model 275 FBS



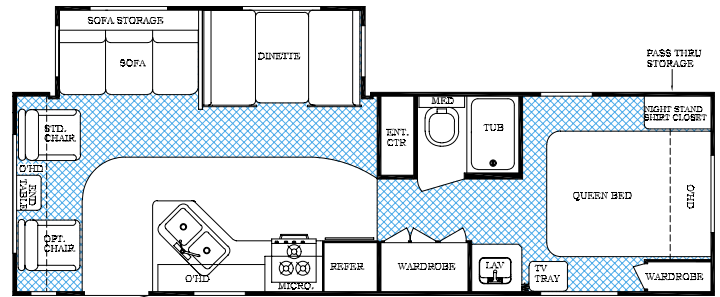
Model 275 GTS



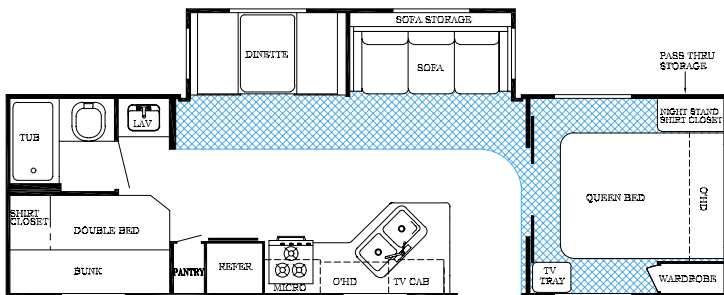
Model 29 SSS



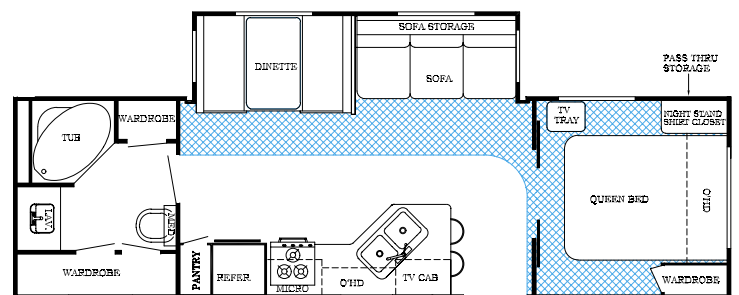
Model 295 DBS



Model 295 RLS



Model 30 BHS

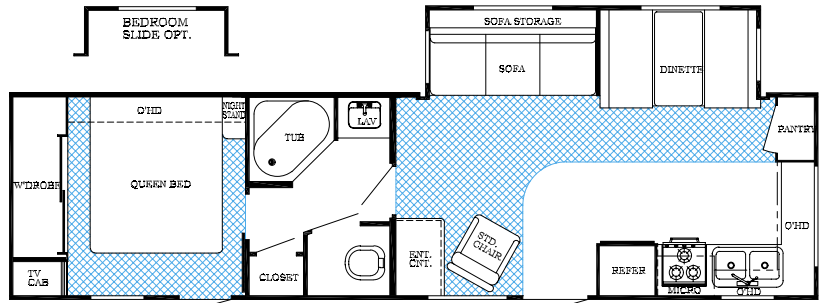


Model 30 RGT

SLIDE-OUT TRAVEL TRAILERS CONTINUED

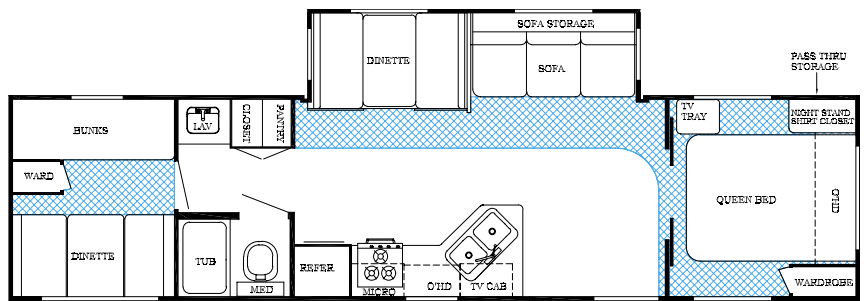


Second entry door is available on models 26 BWS, 26 RLS, 295 RLS.



Model 325 FKS

AUTO DOOR AVAILABLE

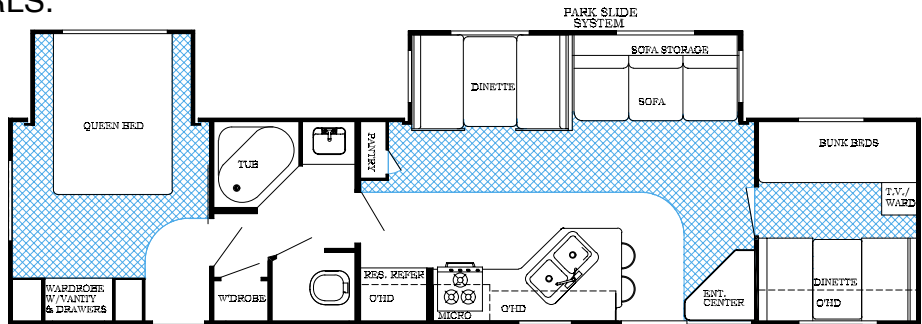


Model 35 FBS

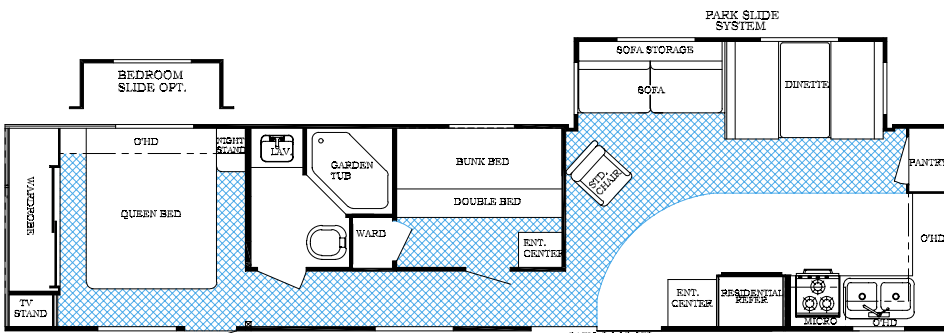
PATIO DOOR AVAILABLE

NEW

Model 36 FRS



PATIO DOOR STD.

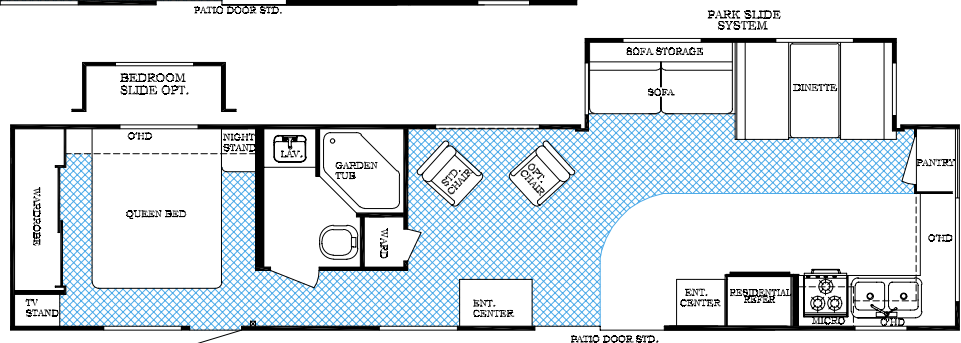


Model 38 BRS

NEW

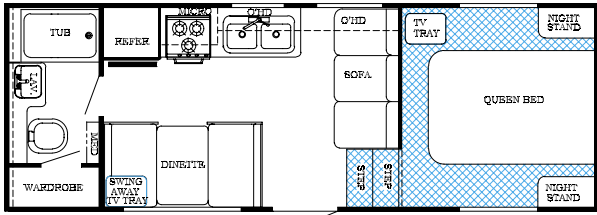
NEW

Model 38 DLS

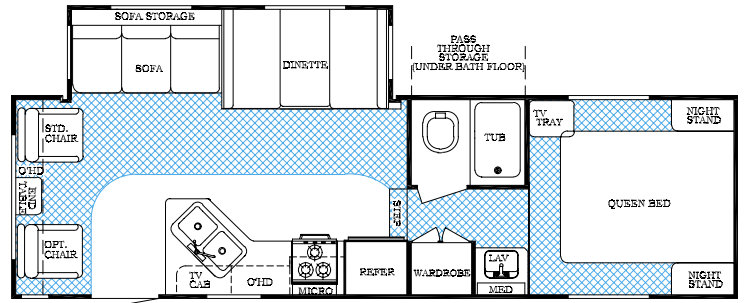


PATIO DOOR STD.

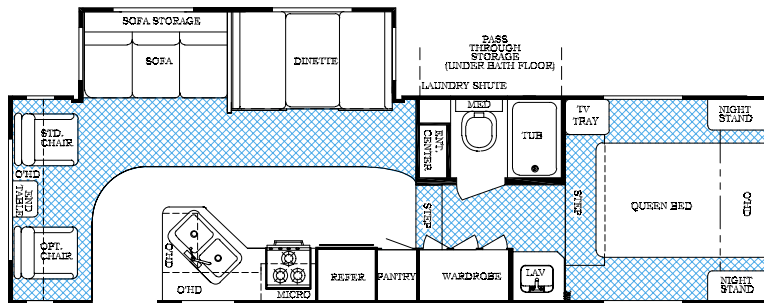
FIFTH WHEELS



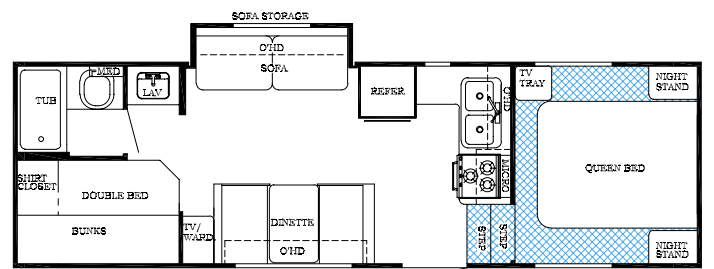
Model 23 FRBL Lite Series 5th Wheel
Base Weight 4705 Lbs.



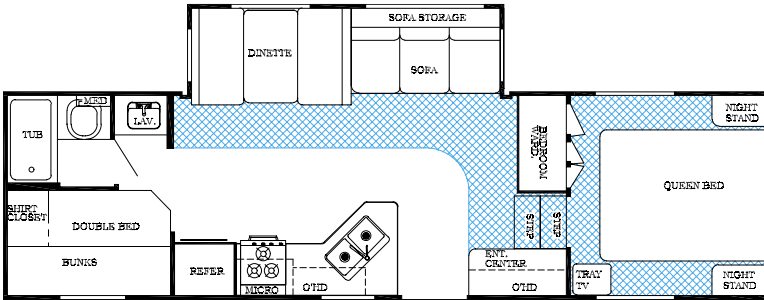
Model 24 FRBW (1/4-profile)



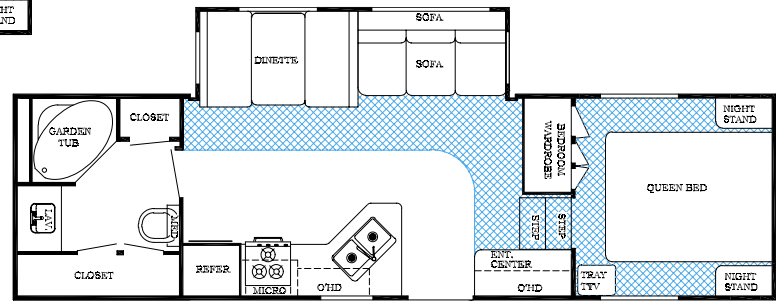
Model 26 FRBW (Mid Profile)



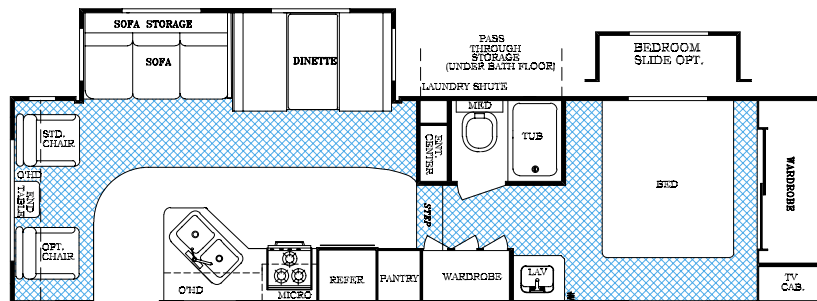
Model 26 FBHS (Mid Profile)



Model 28 FBHS (Mid Profile)



Model 28 FRGT (Mid Profile)



Model 29 FRBW (Full Profile)



TRAVEL TRAILERS & FIFTH WHEELS STANDARD FEATURES

- Hard-wired Slide Rooms
- Contemporary White Doors and Windows
- Large Double Door Refrigerator
- Gas, 110V Water Heater w/Auto Ignition*
- Pass-Thru Storage on Many Models
- 13,500 BTU Air Conditioner*
- Decorator Mini-Blinds Standard!
- Color Coordinated Awning*
- Radius Backed Dinette*
- Natural Oak Mortise & Tennon Cabinet Doors
- Carousel Microwave Oven*
- E-Z Store Sofa - Easiest Access Around!
- Large Storage Chest Behind Sofa Slides
- TV Antenna w/Booster
- Auto Changer Switch for LP Bottles*
- Gas Bottle Cover
- Patio and Hitch Lights
- Large Residential Style Kitchen Sink*
- Double Easy-Open Entry Steps
- Deluxe AM/FM Stereo Cassette with 4 Speakers
- Water Heater Bypass*
- Extra TV Jack w/Tray in Bedroom

- Systems Monitor Panel
- In-Floor Seamless Ducted Heat (frees up more cabinet space)
- Tub & Shower Surrounds*
- Power Range Hood w/Light and Fan
- Queen Bed with Innerspring Mattress (where applicable)
- Wall Mounted Light Switches
- Knife Holders/Spice Rack*
- Designer Bedspreads
- Sink Cover
- LP Leak Detector
- Smoke Detector
- 30 Gallon Space Saver Water Tank
- Power Roof Vent in Bath
- Deluxe Wallpaper Border in Livingroom
- Cable TV Hook-Up
- Bed-Lift Pistons (where applicable)
- Front Stone Guard Awning
- Rain Guard Gutter Rail w/ Down Spout
- Insulated Exterior Storage Compartments

* Optional on Lite & Traveler Series trailers, not all items listed

Superior Construction

- All Walls Mounted ON Floors (not next to them)
- Decked One-Piece Rubber Roof Featuring A 12-Year Warranty
- 2 x 4-1/4" Residential Style Bowed Roof Truss System (strongest construction available) with ducted air conditioning option
- Sidewalls are Screwed to Ceiling and Floor, and Strapped with Strong Galvanized Steel Straps
- Dadoed Belt-Rail Wall Construction, Combined with Galvanized Steel Straps & Screws - For Unmatched UNI-BODY Strength
- 5/8" Floor Decking
- Large Front Radius Entry Door*
- Hand-Cut & Glued Fiberglass Insulation
- Clear Span Power Slide-Out Rooms
- Solid Box & I-Beam Heavy Duty Steel Frames
- Swivel Rocking Chair (where applicable)

Popular Options

- Supreme Package - Raised Oak Cathedral Overhead Doors, 2-3 Fluorescent Lights, Pleated Window Shades, Wood Door Casing (livingroom area), Designer Clock, Upgrade medicine Cabinet Door and Wood Trim slide Facing.
- Solid Oak Fluted Slide Room Fascia
- Shower Pan (in place of tub)
- CD Player (standard on all except Lite & Traveler Series)
- Fiberglass "Slick Side" Exterior
- Roof Rack and Ladder
- Hide-A-Bed Sofa (select slide-outs)
- Spare Tire, Carrier and Cover
- Bright Trim Package (wheels & bumper cover, swing away assist handle)
- Outside Shower
- Free Standing Dinette & Chairs
- Crank Down Stabilizer Jacks
- Electric Hitch Jacks (5th wheels only)
- Bi-Fold Shower Door
- Ceiling Paddle Fan (5th wheels)
- Fantastic Attic Fan



PO Box 1005 • Nappanee, IN 46550
1-800-765-8787 • ext 3288

VISIT OUR WEB SITE AT:
WWW.GULFSTREAMRV.COM



TRAVEL TRAILERS

MODEL NAME	19 FDL	24 RBL 24 BHL	24 FBL	24 FBS	26 BWS	26 RLS	26S8HS	26S7BS	27S7FBS 27S7GTS	27S7FBD 27S7RGT T-27S7FB	29 SSS	29S RLS	29S5DBR	29S5DBS	30 RGT 30 BHS T-30BHS	32S5FKS	35FBS	36FRS	38BRS 38DLS
Overall Length Apx.	19'-3"	25'-9"	26'-6"	26'-6"	29'-10"	29'-6"	29'-10"	29'-10"	29'-10"	29'-10"	32'-9"	30'-11"	32'-9"	32'-9"	31'-8"	34'-8"	35'-6"	35'-7" **	36'-7" ***
Overall Ext. Height Apx. with AC	9'-8"	9'-8"	9'-8"	9'-8"	9'-11"	10'-5"	10'-9"	10'-9"	9'-11"	9'-8"	9'-11"	10'-5"	9'-8"	9'-11"	10'-5"	10'-5"	10'-6"	10'-6"	10'-6"
Net Carrying Capacity	2,538	3,316	3,070	3,206 Est.	2,351	4,180	1,268	TBD	2,176	2,656	1,989	4,170	2,542	2,002	4,208	4,093	3,843	3,233	3,221
Hitch Weight	380	560	450	450 Est.	760	550	560	TBD	750	690	880	720	860	860	670	900	930	1,220	1,190
Total Weight	3,462	4,244	4,380	4,744 Est.	5,409	6,260	6,292	TBD	5,574	5,034	5,891	6,710	5,318	5,858	6,622	6,967	7,247	8,147	8,129
Waste Water Tanks	74 Gal.	74 Gal.	74 Gal.	74 Gal.	74 Gal.	74 Gal.	74 Gal.	74 Gal.	74 Gal.	74 Gal.	74 Gal.	74 Gal.	74 Gal.	74 Gal.	74 Gal.	110 Gal.	74 Gal.	110 Gal.	110 Gal.
Dual LP Gass Bottles	20 Lb.	20 Lb.	20 Lb.	20 Lb.	30 Lb.	30 Lb.	30 Lb.	30 Lb.	30 Lb.	30 Lb.	30 Lb.	30 Lb.	30 Lb.	30 Lb.	30 Lb.	30 Lb.	30 Lb.	30 Lb.	30 Lb.
Furnace	20,000	20,000	25,000	25,000	25,000	25,000	25,000	25,000	25,000	30,000	30,000	30,000	30,000	30,000	30,000	30,000	30,000	30,000	30,000

With Hitch attached **— length is 39'11" ***— length is 39'10"

FIFTH WHEELS

MODEL NAME	23 FRBL	24 FRBW	26 FBHS	26 FRBW	28 FBHS	28 FRGT	29 FRBW
Overall Length Apx.	23'-11"	27'-5"	28'-0"	28'-10"	29'-10"	29'-10"	31'-5"
Overall Ext. Height Apx.	11'	11'-3"	11'	12'	12'	12'	12'
Net Carrying Capacity	3,235	1,715	2,231	4,133	4,183	4,183	3,978
Hitch Weight	940	1,240	1,130	1,270	1,340	1,340	1,690
Total Weight	4,705	6,525	5,899	7,297	7,317	7,317	7,872
Holding Tank with Marine Toilet	74 Gal.	110 Gal.	74 Gal.	110 Gal.	74 Gal.	74 Gal.	110 Gal.
Furnace	25,000	25,000	25,000	25,000	30,000	25,000	30,000

All Weights Shown are in Dry Condition, without options or fluids. Please add for additional options and features. Consult the weight tag inside kitchen cabinet and your tow vehicle owners manual for more information.