

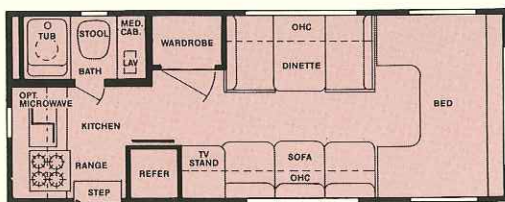
5/87



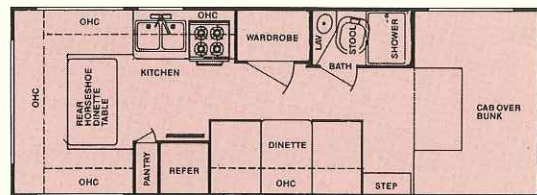
# CONQUEST

Mini-Motorhome

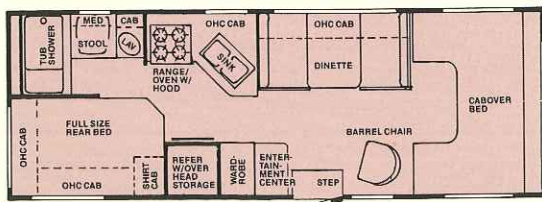
by Gulf Stream Coach



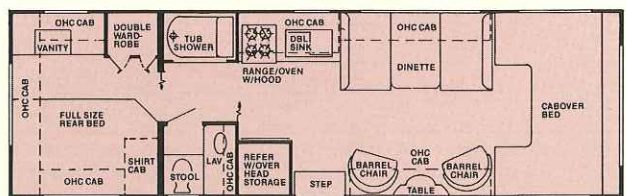
Model 6220



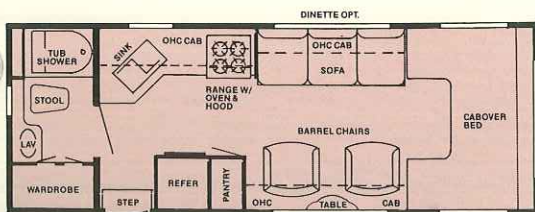
Model 6235



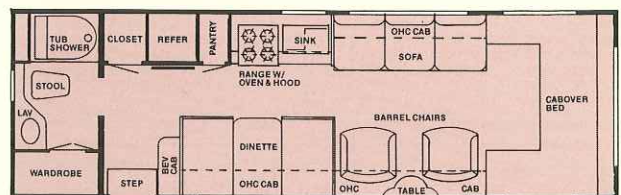
Model 6232



Model 6262 (Twin bed option also available)



Model 6233



Model 6263

# CONQUEST

Mini-Motorhome

## Exterior and Construction

- Welded tubular aluminum cage construction
- Tubular steel floor
- Vacuum-laminated floor with metal underbelly
- High-density foam insulation in floors, walls and roof
- 4-ply vacuum-laminated sidewalls, roof and floor
- Durable fiberglass siding
- Aerodynamic styling
- Generous exterior storage compartments
- Protective bodyside molding
- Distinctive exterior graphics
- Expansive radius slider windows
- Hose storage bumper
- Self-stowing entry step
- Front cab-over window
- Metal flip ends on rear bumper
- Pre-wired and reinforced for roof air
- Outside entry grab handle
- Porch light
- Deadbolt lock on entry door

## Interior and Decor

- 6'8" interior height
- Stile-constructed hickory cabinetry
- Separate dinette
- Barrel chairs (some models)
- Generous overhead storage
- Deluxe carpet with pad throughout
- Brass accent trim on overhead cabinet doors
- Flush door catches on cabinet doors
- Decorator window curtains and shades with fabric valances
- Queen-size bed - cabover
- Full-size bed - bedroom
- Decorative radius-cornered counter-top with custom edging
- Family-style folding table (some models)
- Mini blinds kitchen and bath
- Fire extinguisher
- Velor fabrics

## Electrical Systems

- Easy-store 25' electric supply cord
- Overhead reading lights
- 110-volt receptacles
- Ground fault circuit interrupter
- Well-illuminated interiors
- Outside receptacle

## Bath and Water

- Dual holding tanks - approx. 62 gal.
- Fresh water capacity - approx. 38 gal.
- Demand water system
- City water hook-up
- Tub/shower combo
- Lavatory with base cabinet storage
- Built-in medicine cabinet
- Outside fresh water tank drain
- Quick-recovery 6 gal. gas water heater
- Power vent in bath
- Bath convenience accessories

## Standard Specifications

### Galley Appliances

- Oven with brushed chrome door
- Double stainless steel sink
- Sink covers
- 4 burner gas range
- Lighted power range head
- Large single door refrigerator
- Pre-wired for microwave

### Heating, Ventilation and Air Conditioning

- 25,000 BTU ducted furnace with thermostat
- Screened entry door
- 42 lb. propane tank

### Chassis

#### Chevrolet chassis

- Standard on 23' models
- 350 CID engine
- 3-speed automatic transmission
- Tilt wheel
- Power brakes and steering
- Deluxe exterior mirrors

#### Ford chassis

- Optional on most other models
- 460 CID engine
- 3-speed automatic transmission
- Tilt wheel
- Power brakes and steering
- Standard on 26' models
- Deluxe exterior mirrors
- Radial tires



For further information, contact your local dealer or Gulf Stream Coach, Inc.

Also ask about our Conquest 1000 Series mini motorhomes and Ultra mini motorhomes, Gulf Stream Classic, Sun Stream, Sun Stream Hi-Rise, Sun Vista,

Sun Sport and El Capitan Class A motorhomes, Conquest and Monogram vans, Foxfire and Conquest travel trailers and fifth wheels.

**CONQUEST**  
Div. of  
**Gulf Stream Coach, Inc.**

P.O. Box 1005 □ Nappanee, Indiana 46550

Your Dealer:

Gulf Stream Coach, Inc. reserves the right to make changes in prices, colors, materials, components and specifications and to discontinue models at any time without notice or obligation. Gulf Stream Coach, Inc.

assumes no responsibility for any error in type or print reproduction of specifications, floorplans or photos in this brochure.

See floorplans on other side.