
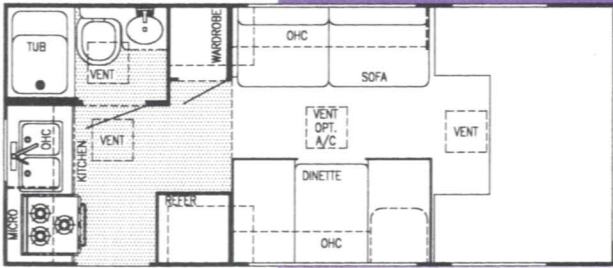


1000 SERIES

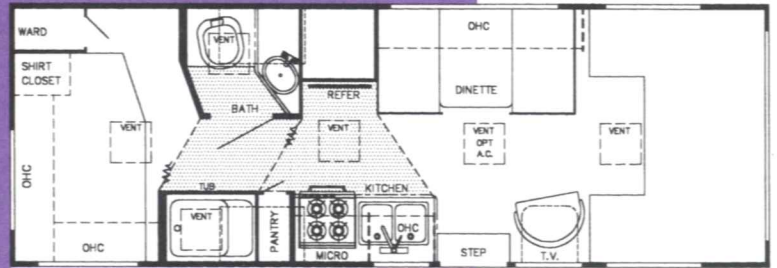
GULF STREAM



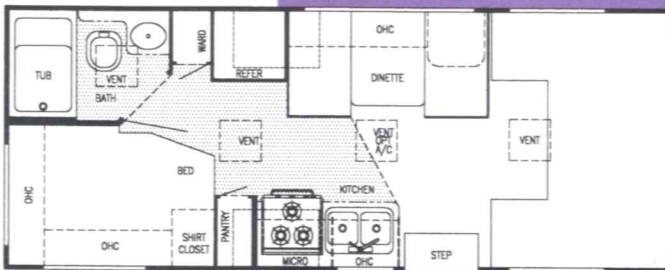
CONQUEST



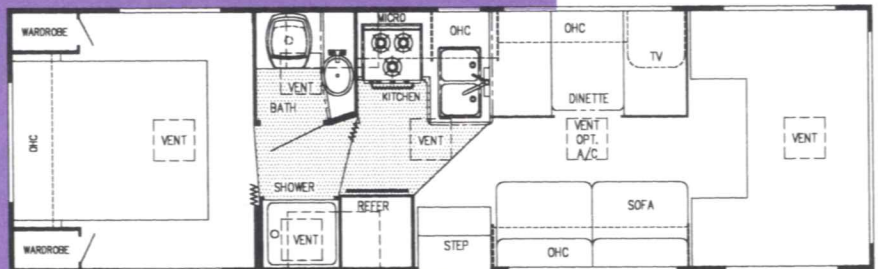
Model 6200



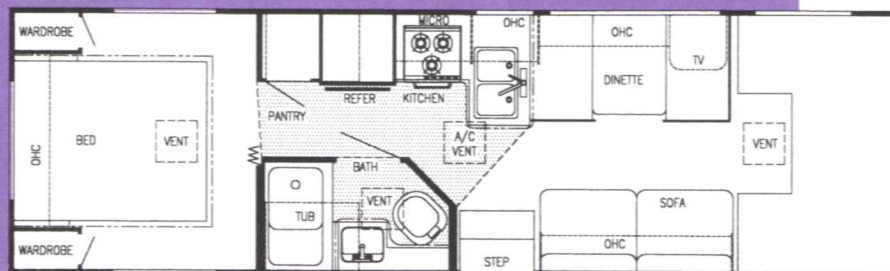
Model 6242



Model 6210



Model 6272/6272HR (Twin Beds, Slider Bed, or Bunks Opt.)



Model 6293HR (Twin Beds or Bunks Opt.)

1000 SERIES[®]

Standard Specifications

Interior and Decor

- 6'-8" Interior Height (most models)
- Stile Constructed Cabinetry
- Raised-Panel Ridgemont Oak Cabinet Doors in Galley
- Rubber Stepwell
- Privacy Curtain Cab
- Deluxe Carpet w/Pad Throughout
- Generous Overhead Storage
- 2-Way Driver & Passenger Seat
- Coordinated Bedspreads & Shams
- Decorator Curtains & Shades w/ Valances
- Queen Size Bed, Cab-Over
- Power Vent in Commode
- Tub Surround (most models)

Electrical Systems

- Easy Store 30' Elect. Power Cord
- Overhead Reading Lights
- 110-Volt Receptacles
- Ground Fault Circuit Interrupter
- Well Illuminated Interiors
- Outside Receptacle
- TV Antenna w/Amp & Boost
- Auxiliary Battery
- Converter w/Charger (45 Amp)
- Generator Prep
- AM/FM Cassette w/4 Speakers

Exterior and Construction

- Smooth Fiberglass Exterior
- Rear Ladder
- Chrome Bumper Cover
- Deluxe Awning
- Welded Aluminum Cage Construction
- 4-Ply Laminated Walls, Roof & Floor
- Laminated Rubber Roof w/ Heliarc-Welded Aluminum Rafters
- Tubular Steel Floor
- Laminated Floor w/ Metal Underbelly
- Foamed, Sealed & Undercoated
- Generous Above-Floor Exterior Storage
- Partial Basement Storage Available (some models)
- Distinctive Exterior Graphics
- Expansive Radius Slider Windows
- Hose Storage Bumper
- Self Storing Entry Step
- Front Cab-Over Window
- Outside Grab Handle
- Porch Light
- Dead Bolt on Entry door
- Spare Tire Carrier
- Mag-Look Wheel Covers
- Full Basement (6272HR, 6293HR)

Bath and Water

- Demand Water System
- City Water Hook-Up
- Tub/Shower Combo
- Lavatory w/Base Cabinet Storage

Ford Chassis

- 6.8L, V-10 Engine
- 4 Speed Auto. Overdrive Trans.
- Tilt Wheel Steering
- Power Brakes & Steering
- Dual Air Bags
- Radial Tires
- Cruise Control
- Gas Tank -
Approx. 35 Gal. (20' - 21')
Approx. 55 Gal. (23' & Larger)
- E-30 Chassis (6200, 6210)
- Super-Duty (6242, 6272, 6293)
- FORD Turbo Diesel Chassis Opt (most models)
- Dual Air Bags

Appliances

- Microwave Installed
- 3-Burner Range Top
- Power Range Hood w/Monitor Panel
- Large 2-Way Sgl. Door Refer.(20' - 21')
- Large 2-Way Dbl. Door Refer.(23' - 27')
- 6 Gal. Elect. Ign. Water Heater
- 25,000 BTU Furnace
- 13,500 BTU Roof Air
- Large LP Gas Tank
- LP Leak Detector
- Carbon Monoxide Detector

Popular Options

- Chevrolet Chassis (6200, 6210, 6242, 6272)

Gulf Stream Coach, Inc. reserves the right to make changes in prices, colors, materials, components and specifications and to discontinue models at any time without notice or obligation. Gulf Stream Coach, Inc. assumes no responsibility for any error in type or print reproduction of specifications or floorplans in this brochure. TP 10M 3/98

MODEL	Chassis	Wheel Base	GVWR	*Length	*Height (w/A/C)	*Black	*Gray	*Fresh	LP Tank
6200	Ford E-30 V-10	138	10,500	20' - 10"	10' - 7"	19	19	20	41 lb.
6210	Ford E-30 V-10	138	10,500	22' - 4"	10' - 9"	16	20	29	41 lb.
6242	Ford E-40 V-10	186	14,050	25' - 4"	10' - 8"	19	25	38	41 lb.
6272	Ford E-40 V-10	186	14,050	28' - 3"	11' - 1"	46	46	47	41 lb.
6272HR	Ford E-40 V-10	186	14,050	28' - 3"	11' - 3"	46	46	47	41 lb.
6293HR	Ford E-40 V-10	208	14,050	29' - 4"	11' - 3"	34	34	39	41 lb.

* Approximate, and subject to change without notice.



GULF STREAM COACH, INC.
P.O. BOX 1005 • NAPPANEE, IN 46550

Visit our Web Site at:
www.GULFSTREAMCOACH.com