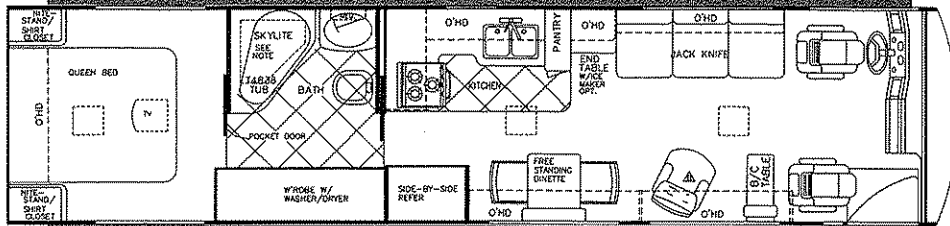
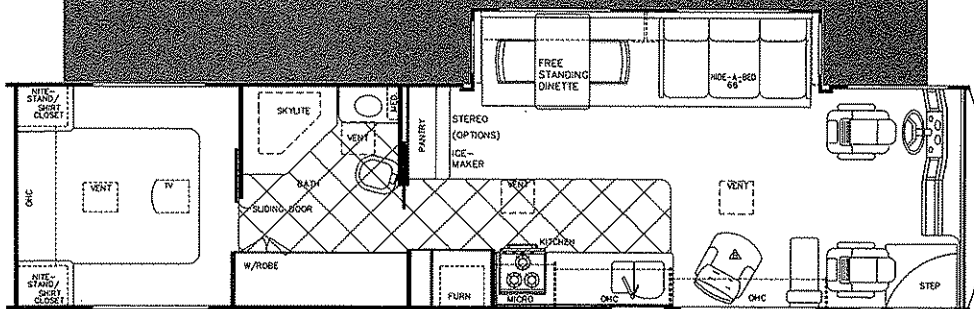


5199

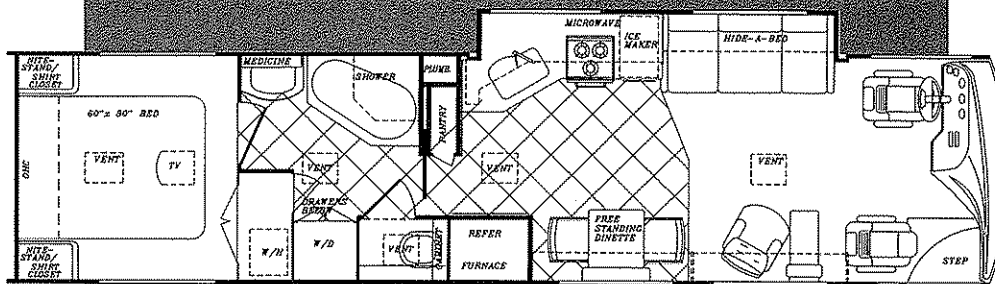
SCENIC CRUISER



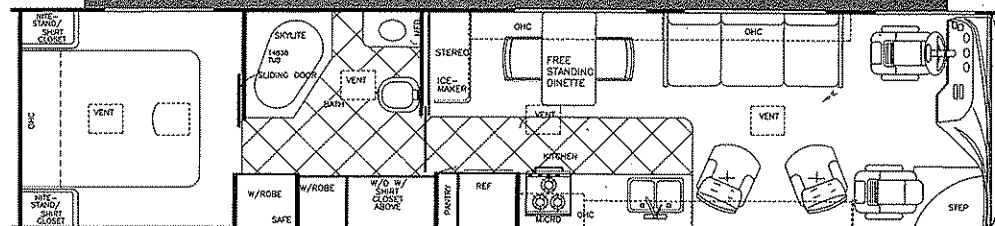
Model 8360 DIESEL



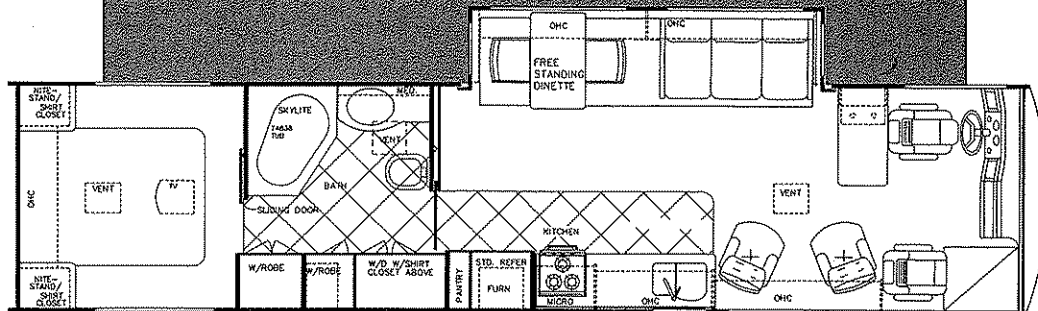
Model 8361 DIESEL



Model 8362 DIESEL



Model 8380 DIESEL



Model 8381 DIESEL

SCENIC CRUISER®

Interior and Decor

- Mirage Ivory Laminated or Cherry Wood Cabinetry
- Solid Surface Countertops Throughout
- Ceramic Tile Floor in Kitchen and Bath
- Deep Overhead Cabinets in Slide-Outs
- Day/Night Pleated Shades in LVRM & BDRM
- Pleated Privacy Curtain
- 6-Way Power Driver & Passenger Seats
- Deluxe Furniture Package
- Deluxe Door and Window Drapes
- Coordinated Bedspread and Shams
- Generous Overhead Storage Compartments
- Free Standing Dinette and 2 Chairs (most models)
- Queen Size Bed w/Deluxe Innerspring Mattress
- Mini-Blinds in Kitchen
- Mirrored Closet Doors
- Heavy Duty Clear Vinyl Runner Over Carpet

Appliances

- Deluxe 3-Burner High-Performance Range w/Oven
- Lighted Power Range Hood
- 19" Color TV in Front Overhead
- 13" Color TV in Bedroom
- VCR
- TV Antenna w/Amp, Boost and 2 Jacks
- 2-Door, 2-Way Refrigerator
- LP Gas Leak Detector
- Carbon Monoxide Detector

Heating and Air Conditioning

- Thermopayne Windows Throughout
- (2) Low Profile Roof Air Conditioners - Ducted Through Dual Insulated Ceiling Ducts
- Insulated Ducted Furnace w/Elect. Ignition 40,000 BTU (most models)

For further information and available floorplan options, contact your local dealer or Gulf Stream Coach, Inc. Gulf Stream Coach, Inc. reserves the right to make changes in prices, colors, materials, components and specifications and to discontinue models at any time without notice or obligation. Gulf Stream Coach, Inc. assumes no responsibility for any error in type or print reproduction of specifications or floorplans in this brochure. TP 2.5M 5/99 ER



Exterior and Construction

- Large One-Piece Panoramic Windshield
- Unified "New Generation" Body Structure, Providing a Cradle of Strength:
 - 1-1/2" x 1-1/2" Tubular Steel Sub-Floor Trusses
 - 1-1/2" x 1-1/2" Tubular Steel Floor Framing
 - Floor is Laminated w/Metal Under-Belly & Block Foam
 - Vacuum Bond Laminated Sidewalls w/Tubular Aluminum Framing and One Piece Fiberglass w/ Seamless Mende Board Backer
 - Vacuum Bond Laminated Roof w/Tubular Aluminum Framing, and Roof Brick Block Foam Insulation Throughout
- One-Piece, Radiused Rubber Roof w/12 Year Warranty on the Rubber Material
- Virtually Seamless Weyerhaeuser Structurwood Floor Decking
- Cold Rolled Steel Sidewall-to-Roof Transition Member
- Upgraded Hinged & Insulated Ext. Storage Doors
- Heated & Fully Enclosed Holding Tanks
- High-Density Block Foam Insulation Throughout
- Molded Roof Brick Insulation, Surrounds Ducting for Roof Air Conditioning
- Sidewalls Lag-bolted Every 8" to Sub-Floor & Floor
- Fully Welded Steel Firewall
- Rear Fiberglass Cap with Integrated Bumper
- Outstanding Side-to-Side, Carpeted and Lighted Exterior Pass-Through Storage
- Entry Door w/Deadbolt Lock
- Sealed Perimeter and Engine Compartment
- Deluxe Outside Mirrors
- Jalousie Windows in Bedroom
- Protective Vinyl Bra for Front of Coach

Electrical Systems

- Easy-Access Dual Battery System
- Power Vent in Bath and Kitchen
- Electric Supply Cord
- Electric Overload Protection
- Automotive Color-Coded Wiring
- Lighted Entry & Aisle Lights
- 12V, 45-Amp Converter w/Battery Charger

P.O. Box 1005 • Nappanee, IN 46550
Ph. 1-800-289-8787, ext. 3288

DIESEL MODELS	8360	8361	8362	8380	8381
Standard Chassis:	SPARTAN MTN MASTER	SPARTAN MTN MASTER	SPARTAN MTN MASTER	SPARTAN MTN MASTER	SPARTAN MTN MASTER
Engine (HP)	325	325	325	325	325
Wheelbase	234"	234"	234"	252"	252"
GVWR (lbs.)	31,000	31,000	31,000	31,000	31,000
DIMENSIONS:					
Overall Length (approx.)	37' 6"	37' 6"	37' 6"	39' 0"	39' 0"
Overall Height w/Roof A/C	12' 0"	12' 0"	12' 0"	12' 1"	12' 1"
Overall Width	101"	101"	101"	101"	101"
Interior Height	80"	80"	80"	80"	80"
Interior Width	97"	97"	97"	97"	97"
CAPACITIES:					
Fresh Water Tank (Gal.)	100	100	100	100	100
Grey Holding Tank (Gal.)	50	50	50	50	50
Black Holding Tank (Gal.)	50	50	50	50	50
Water Heater w/DSI (Gal.)	10	10	10	10	10
LP Gas Tank (lbs.)	150	150	150	115	115
Fuel Tank (Gal.)	100	100	100	150	150
Furnace (BTU's)	40K	40K	40K	40K	40K

Chassis

- MOUNTAIN MASTER Chassis
Featuring Cummins 8.3 Litre, Turbo-Charged 325 HP Diesel Engine, 915 ft. lb. Torque, Side-Mounted Radiator, and Independent Front Suspension
- Allison MD-3060P 6-Speed, Electronically Shifted Automatic Transmission
- Full Air-Ride Suspension
- Full Air Brakes
- High Capacity Automotive Heater
- Tilt Steering Wheel
- PAC Brake

Bath and Water

- Super-Flow Manifold Water Distribution System (N/A w/CSA)
- Deep Solid Surface Sink w/Flexible Sprayer
- Gold Neo-Angle Shower Surround
- Sky Dome in Shower Area
- Mirrored Medicine Cabinet
- Dual Pedestal Marine Toilet w/Sprayer

Deluxe Std. Features

- Auto Dash Air Conditioner
- Auto Cruise Control
- Auto Electric Step Cover
- Aluminum Wheels
- Rally Hook-Up
- Electric Step
- Rear Ladder
- Floor Mats
- Super Slick Exterior Fiberglass
- AM/FM Cassette w/4 Spkr.
- Monitor Panel in Range Hood
- 150 lb. LP Tank (36' models)
- Radial Tires
- Tinted Windshield & Windows
- Wall Safe
- Lighted Entry Step
- Driving Lights

Popular Options

- Deluxe Exterior Paint Upgrade
- 4-Door Flush-Mount Refrigerator
- Whirlpool Jets in Tub
- Satellite Dish

Visit our Web Site at:
www.GULFSTREAMCOACH.com

GULF STREAM'S NEW GENERATION CRADLE OF STRENGTH

1. Seamless Rubber Roof For Greater Energy Efficiency and Dependability.

2. Luan Decking for Additional Strength.

3. Molded E.P.S. Brick Insulation Provides Consistent Insulative Value As Well As Superior Dimensional Rigidity.

4. One-Piece Formed Aluminum Air Conditioning Duct, Completely Surrounded By Block Foam Insulation.

5. Bubble-Wrapped Foil Insulation Provides Superior Insulation.

6. Rugged Welded Tubular Aluminum Roof Framing.

7. Soft Touch Ceiling Fabric for Added Sound Insulation.

8. Aluminum Cove Molding.

9. Bubble-Wrapped Foil Insulation Minimizes Thermal Transfer.

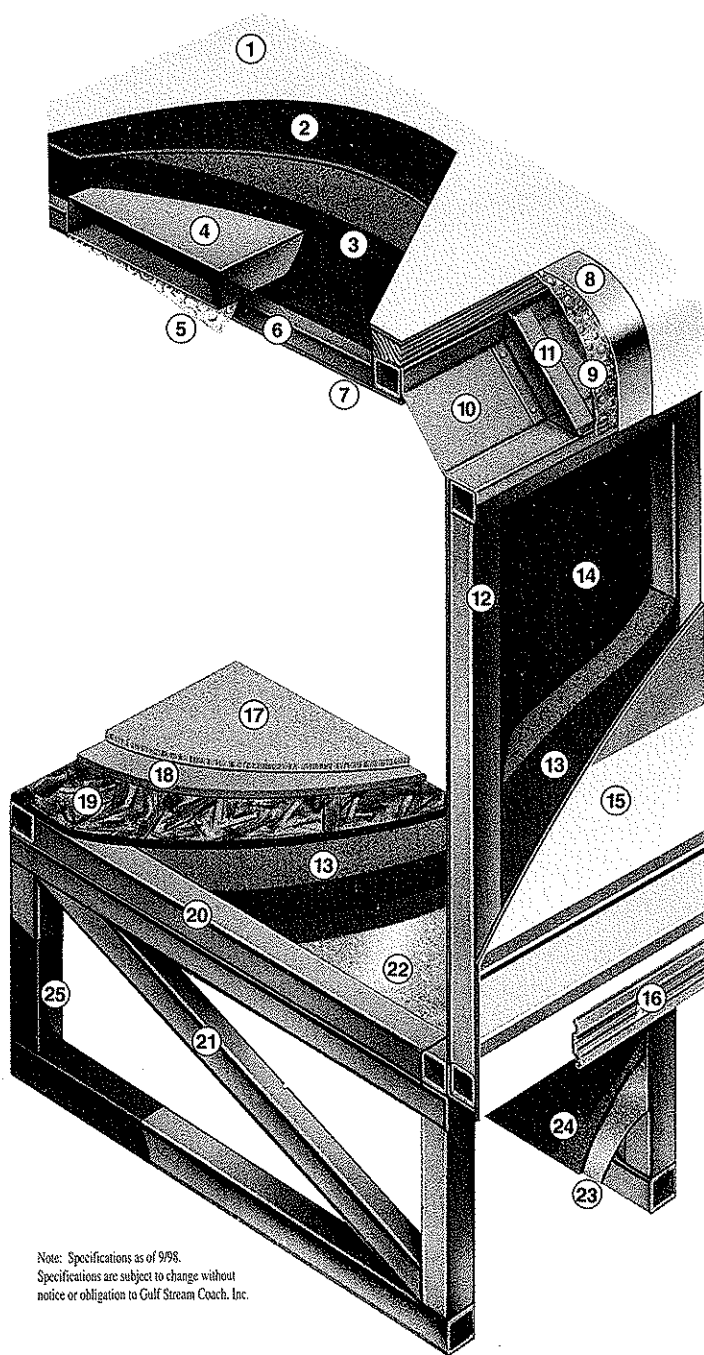
10. Rugged Roll-Formed Steel Roof-to-Sidewall Transition Member Insures Structural Integrity and Stability.

11. Die-Stamped Steel Transition Member Gusseting Provides Greater Strength and Structural Integrity.

12. Rugged Heavy-Gauge Tubular Aluminum, Fixture Welded to Form the Sidewall Framing.

13. High-Density E.P.S. Insulation Provides Superior Laminating and Bonding Characteristics and Insures Greater Energy Efficiency.

14. Interior Wall Panels Securely Laminated to Sidewall Framing.



Note: Specifications as of 9/98.
Specifications are subject to change without notice or obligation to Gulf Stream Coach, Inc.

15. "Slick" Fiberglass Exterior, Vacuum-Bond Laminated to Sidewall Framing for Lasting Beauty and Durability.

16. Aluminum Trunk Door Hinge Extrusion Provides A Tight Seal Discouraging Air or Water Infiltration.

17. High-Quality Stain-Resistant Carpeting Available in Designer-Coordinated Colors.

18. Extra-Thick Padding Under Carpet Provides Extra Comfort and Increases Carpet Durability.

19. Continuous Structurwood Floor Decking Laminated to Steel Floor Structure Assures a Quiet, Long-Lasting, Rigid Floor

20. Heavy-Gauge Steel Tube Frame Fixture Welded for Extra Strength and Stability.

21. Heavy-Gauge Steel Tube Framing, Fixture Welded Floor Truss System Provides the Strongest Motorhome Foundation in the Industry.

22. Seamless Layer of Galvanized Steel Securely Laminated to the Steel Floor Framing.

23. Galvanized Steel Used to Form Each Storage & Holding Compartment.

24. Durable All-Weather Carpeting Completes Each Accessible Storage Compartment, Providing Extra Protection for Luggage and Valuables.

25. Rust-Prohibitive Paint Coating Applied to All Steel Framing Assures Corrosion and Rust Protection.



GULF STREAM - BUILT TO LAST!