

ULTRA SUPREME 2003

CLASS A MOTORHOMES

FLOORPLANS & SPECIFICATIONS



Ultra Class A Features, Standards & Options

Interior & Decor

- Hardwood Stiles & Doors
- Soft Touch Ceiling
- Self-Edged & Radius-Cornered Countertops
- Windshield Privacy Drape
- 3-way Driver Seat
- Designer Soft Touch Cockpit Seats
- Generous Overhead Storage
- 7' Interior Ceiling Height
- Boarders in Kitchen & Bedroom

Exterior & Construction

- "Cradle of Strength" Construction
- Tubular Metal Cage Construction
- Welded Steel Truss Sub-Floor System
- Vacuum-Bond Laminated Sidewalls
- High Density Block Foam Insulation
- Enclosed & Heated Holding Tanks
 - Bus-Style Storage Doors
 - Radius Entry Door
- Smooth Fiberglass Exterior
- Tinted Windows
- Galvanized Steel Exterior Storage
- Automotive Style Caps Front & Rear
 - Fiberglass Roof
 - Painted Skirt
 - Painted Graphics
- Full Chassis Rail Extension

Bath & Water

- Demand Water System
- City Water Hook-Up
- Double Residential-Style Sink
 - Shower Stall
 - Marine Commode
- Gravity Drains On Fresh Water Lines
- Neo-Angle Shower w/ Glass Surround

Deluxe Standard Features

- 27" Color TV w/ Remote
- Microwave Oven
- 3-Burner High Performance Range
- Lighted, Power Range Hood
- 2-Door, 2-way Refrigerator
- TV Antenna w/ Amp and Boost (2 Jacks)
- Hydraulic Leveling System
- AM/FM CD Stereo w/ 4 Speakers
 - Flush Floor Slides
 - 40,000 BTU Furnace
 - 13,500 BTU Ducted A/C

Electrical Systems

- On Dash Emergency Start
- Easy-Access Dual Battery System
- 12-Volt, 45-Amp Converter
- Electric Supply Cord
- Electric Overload Protection
- Automotive-Type, Color-Coded Wiring
- 12-Volt Battery Disconnect
- Converter w/ Battery Charger
 - Auto Start Switch
 - DSS Prep.

Chassis

- Ford Super Duty w/ Triton V-10 Engine and 4-Speed Automatic Transmission
- GVWR 20,500 (8328, 8336)
- GVWR 22,000 (8353, 8359)
 - Electronic Ignition
- Power Steering and Brakes
- High Capacity Automotive Heater & A/C w/ R134 Environmental Refrigerant
- Tilt Steering Wheel
- Cruise Control

Popular Options

- Bedroom 11,000 BTU Ducted A/C w/ Selector Switch
- Back Up Monitor
- Exclusive Bedroom Ceiling Overhead TV (8328)
- Computer Work Station (8359)
- Onan or Generic Generator
 - 50 Amp Service
 - Drivers Door
 - VCR
- Wheel Covers
- Wheel Liners
- Spare Tire
- Rear Ladder
- Washer/Dryer Combo (8353)

Comfortable Travel with Friends and Family

Ultra Supreme Koala Pak



Introducing the New Koala Package.

Upgrade Your Ultra Supreme with the new Koala package.
This value packed option includes:

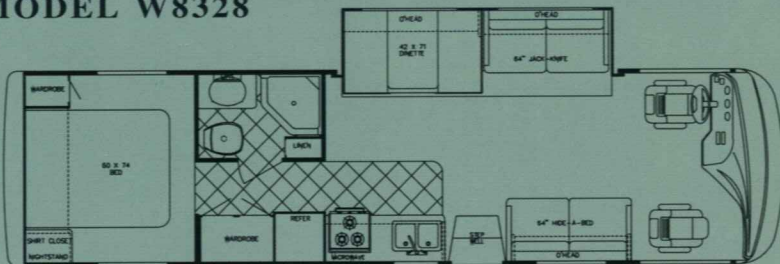
- Thermal Pane Windows
- Fantastic Fans
- Hella Fog Lights
- Corian Countertops in Kitchen
- Satellite Dish w/o Receiver
- Upgrade Exterior Paint & Graphics
- Water Filter
- Outside Rinse & Wash System
- Fluorescent Lights

Mr Worthmore Says:

"I know class when I see it!"

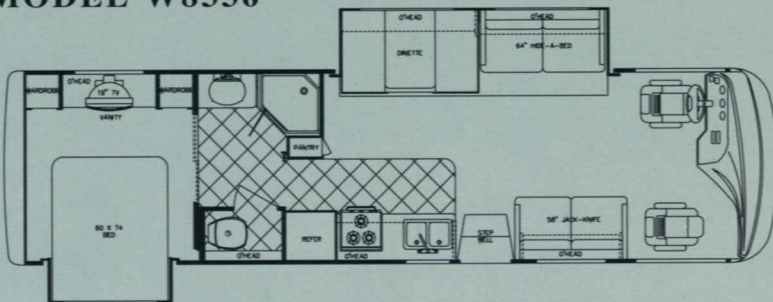
Call your dealer to see this unbelievable value!

MODEL W8328



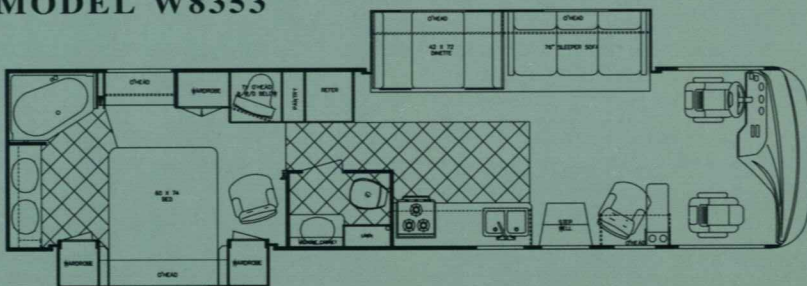
Chassis	Ford V-10
Fuel	75 gal
GVWR	20,500
Length	33'-4"
Height	11'-6"
Width	100"
Wheelbase	208"
Black	50 gal
Grey	50 gal
Fresh	55 gal
LP Gas Tank	85 lbs.
Furnace	40,000 BTUs
Water Heater	6 gal

MODEL W8336



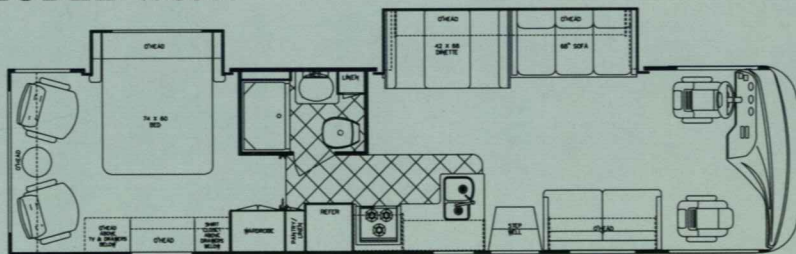
Chassis	Ford V-10
Fuel	75 gal
GVWR	20,500
Length	33'-4"
Height	11'-6"
Width	100"
Wheelbase	208"
Black	50 gal
Grey	50 gal
Fresh	55 gal
LP Gas Tank	85 lbs.
Furnace	40,000 BTUs
Water Heater	6 gal

MODEL W8353



Chassis	Ford V-10
Fuel	55 gal
GVWR	20,000
Length	36'-8"
Height	11'-6"
Width	100"
Wheelbase	242"
Black	50 gal
Grey	50 gal
Fresh	55 gal
LP Gas Tank	85 lbs.
Furnace	40,000 BTUs
Water Heater	6 gal

MODEL W8359



Chassis	Ford V-10
Fuel	75 gal
GVWR	22,000
Length	35'-8"
Height	11'-6"
Width	100"
Wheelbase	242"
Black	50 gal
Grey	50 gal
Fresh	55 gal
LP Gas Tank	85 lbs.
Furnace	40,000 BTUs
Water Heater	6 gal

POST OFFICE BOX 1005 NAPPANEE, IN 46550

Your Dealer



VISIT
www.gulfstreamrv.com

FOR MORE DETAILED INFORMATION...
OR CALL 1-800-765-8787 EXT. 3288

* All weights and measures are approximate and subject to change without notice. For more information, contact your local dealer, www.gulfstreamRV.com or Gulf Stream Coach, Inc. Gulf Stream Coach, Inc. reserves the right to make changes in prices, colors, materials, components and specifications and to discontinue models at any time without notice or obligation. Gulf Stream Coach, Inc. assumes no responsibility for any error in type or print reproduction of specifications or floorplans in this brochure. Photographs may show equipment or items that are optional and are not included in the purchase price of each coach, fifth wheel or trailer. © Copyright 2002 Gulf Stream Coach, Inc. Nappanee, Indiana USA